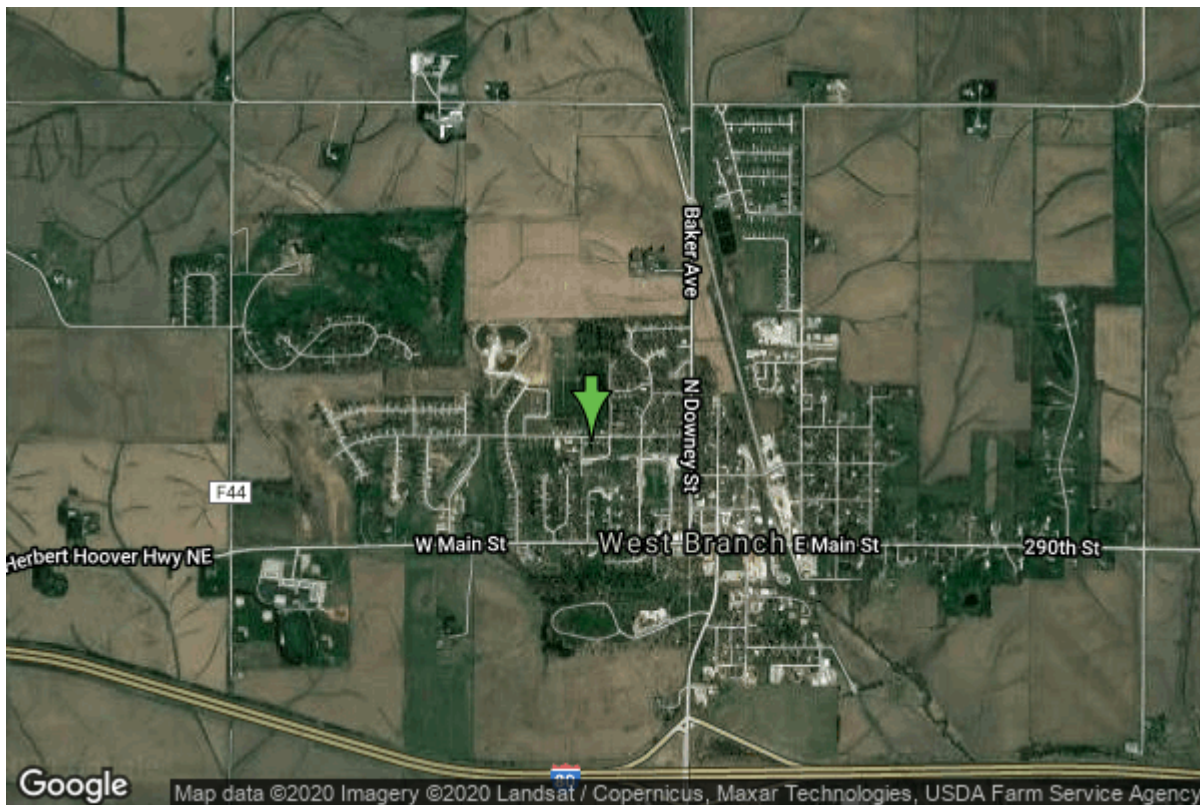


Well W#8612 Information



Date Received		State	Iowa
Owner Name	West Branch, City Of	County	Cedar
Alt Name	#2	Quadrangle	West Branch, Iowa
WNumber	8612	Township	T79N
PWTS ID	0	Range	R4W
PWS ID	1694000	Section	6
Storet ID	0	Quarter	SE SE NW
SDWIS ID	2411975	Latitude	41.6746500000
USGS ID	0	Longitude	-91.3501830000
Project	Source Water Protection	Accuracy	
Operator	Unknown	UTM X	637330
		UTM Y	4614969

Site Type	Drilled hole	Drilling Company	Edwards Inc., D.E.
Well Status	Active	Drilling Date	01/01/1957
Field Located	No	Drilling Method	Cable
Elevation	779 ft	Bedrock Depth	0 ft
Elevation Accuracy	Digital Elevation Model Accurate to 5 ft	Well Depth	428 ft
Landscape Position	Unknown	Total Depth	428 ft
		Well Types	Municipal, Public Supply
		Aquifers	Silurian

Casing Construction Information

Date	06/01/1957	Casing Type	Steel
Start Depth	0.00 ft	End Depth	201.00 ft

Diameter	8.00 in	Amount	0.00 ft
Comments			

Log Information

Date	
Log Types	Unknown
Prepared By	Unknown
Comments	

Date	
Log Types	Strip log
Prepared By	Unknown
Comments	

Stratigraphy Information

System	Unknown		
Series			
Group			
Formation			
Member			
Submember			
Start Depth	0.00 ft	End Depth	203.00 ft
Contact Accuracy			
Penetration			
Primary Lithology		Percent	
Secondary Lithology		Percent	
Tertiary Lithology		Percent	
Comments			

System	Silurian		
Series			
Group			
Formation			
Member			
Submember			
Start Depth	203.00 ft	End Depth	370.00 ft
Contact Accuracy			
Penetration			
Primary Lithology	Dolomite	Percent	0
Secondary Lithology	Sandstone	Percent	0
Tertiary Lithology	Chert/Chalcedony	Percent	0
Comments			

System	Silurian
Series	

Group			
Formation	Blanding		
Member			
Submember			
Start Depth	370.00 ft	End Depth	428.00 ft
Contact Accuracy			
Penetration			
Primary Lithology	Dolomite	Percent	0
Secondary Lithology	Chert/Chalcedony	Percent	0
Tertiary Lithology		Percent	
Comments			

Water Production Information

Date	06/01/1957	Start Time	
Aquifer	Unknown		
Static Water Level	93.00 ft	Yield	150 gallons per minute
Pumping Water Level	153 ft	Yield Method	Unknown
Measurement	Unknown	Pump Test	Yes
Pump Method	Unknown	Duration	0 mins
Comments	ACIDIZED WITH 750 GAL HCL.		

Chip Storage Information

Date	08/09/1957		
Storage	EL9-12	Bin	
Number of Boxes	1	Number of Samples	41
Sample Intervals	5	Sample Gaps	0-203
Sample Top	203 ft	Sample Bottom	428 ft
Washed Top	203 ft	Washed Bottom	428 ft
Duplicate Storage			
Comments			

<https://www.iuhr.uiowa.edu/igs/geosam/well/8612/general-information>