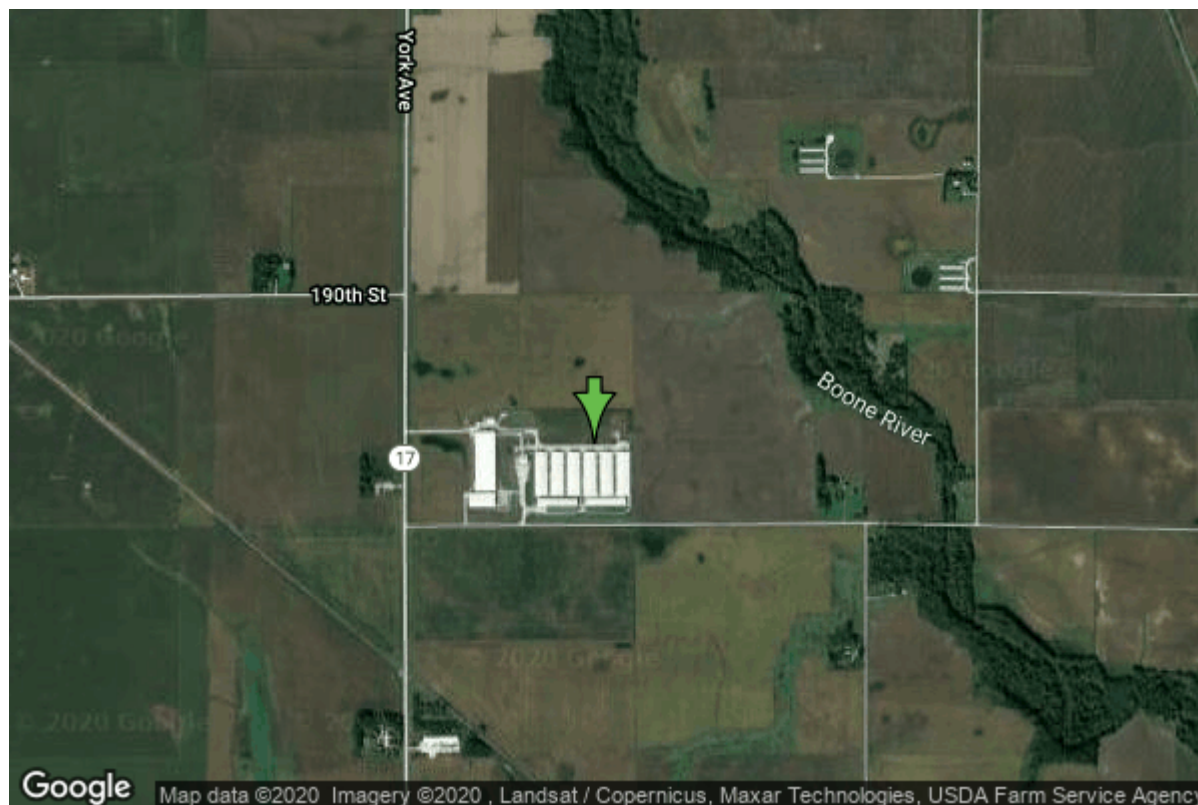


# Well W#86202 Information



<b>Date Received</b>		<b>State</b>	Iowa
<b>Owner Name</b>	Iowa Cagefree LLP	<b>County</b>	Wright
<b>Alt Name</b>	#3	<b>Quadrangle</b>	Renwick, Iowa
<b>WNumber</b>	86202	<b>Township</b>	T92N
<b>PWTS ID</b>	2152727	<b>Range</b>	R26W
<b>PWS ID</b>	9937101	<b>Section</b>	19
<b>Storet ID</b>	0	<b>Quarter</b>	NW SE NE
<b>SDWIS ID</b>	0	<b>Latitude</b>	42.7704620000
<b>USGS ID</b>	0	<b>Longitude</b>	-93.9627820000
<b>Project</b>		<b>Accuracy</b>	
<b>Operator</b>		<b>UTM X</b>	421233
		<b>UTM Y</b>	4735775

<b>Site Type</b>	Drilled hole	<b>Drilling Company</b>	Shawver Well Co.
<b>Well Status</b>	Active	<b>Drilling Date</b>	05/22/2017
<b>Field Located</b>	No	<b>Drilling Method</b>	Rotary
<b>Elevation</b>	1131 ft	<b>Bedrock Depth</b>	86 ft
<b>Elevation Accuracy</b>	Topo Map Accurate to 2 ft	<b>Well Depth</b>	185 ft
<b>Landscape Position</b>	Unknown	<b>Total Depth</b>	185 ft
		<b>Well Types</b>	Livestock, Public Supply
		<b>Aquifers</b>	

## Hole Construction Information

<b>Date</b>	05/22/2017	<b>Depth</b>	22.00 ft
<b>Diameter</b>	17.00 in		

## Comments

---

Date	05/22/2017		
Diameter	12.20 in	Depth	132.00 ft
Comments			

---

Date	05/22/2017		
Diameter	7.88 in	Depth	185.00 ft
Comments			

## Casing Construction Information

Date	05/22/2017	Casing Type	Steel
Start Depth	0.00 ft	End Depth	132.00 ft
Diameter	8.63 in	Amount	132.00 ft
Comments			

---

Date	05/22/2017	Casing Type	Perforated Steel
Start Depth	128.00 ft	End Depth	185.00 ft
Diameter	7.00 in	Amount	57.00 ft
Comments			

## Grout Construction Information

Date	05/22/2017		
Grout Type	Cement	Grout Placement	Unknown
Start Depth	0.00 ft	End Depth	132.00 ft
Comments			

## Log Information

Date	05/22/2017		
Log Types	Drillers log		
Prepared By	Shawver Well Co.		
Comments			

## Formation Information

Formation Color	Brown	Formation Lithology	clay
Start Depth	0.00 ft	End Depth	5.00 ft
Comments			

---

Formation Color	Blue	Formation Lithology	sandy clay
Start Depth	5.00 ft	End Depth	46.00 ft
Comments			

<b>Formation Color</b>	No Color Noted	<b>Formation Lithology</b>	sand
<b>Start Depth</b>	46.00 ft	<b>End Depth</b>	71.00 ft
<b>Comments</b>			
<b>Formation Color</b>	Blue	<b>Formation Lithology</b>	clay
<b>Start Depth</b>	71.00 ft	<b>End Depth</b>	86.00 ft
<b>Comments</b>			
<b>Formation Color</b>	Yellow	<b>Formation Lithology</b>	limestone
<b>Start Depth</b>	86.00 ft	<b>End Depth</b>	98.00 ft
<b>Comments</b>			
<b>Formation Color</b>	Brown	<b>Formation Lithology</b>	limestone
<b>Start Depth</b>	98.00 ft	<b>End Depth</b>	132.00 ft
<b>Comments</b>	with sandstone seams		
<b>Formation Color</b>	Yellow	<b>Formation Lithology</b>	limestone
<b>Start Depth</b>	132.00 ft	<b>End Depth</b>	140.00 ft
<b>Comments</b>	with sandstone		
<b>Formation Color</b>	Varicolored	<b>Formation Lithology</b>	limestone and shale
<b>Start Depth</b>	140.00 ft	<b>End Depth</b>	161.00 ft
<b>Comments</b>			
<b>Formation Color</b>	No Color Noted	<b>Formation Lithology</b>	crevice/fracture/void
<b>Start Depth</b>	161.00 ft	<b>End Depth</b>	163.00 ft
<b>Comments</b>			
<b>Formation Color</b>	Brown	<b>Formation Lithology</b>	limestone
<b>Start Depth</b>	163.00 ft	<b>End Depth</b>	185.00 ft
<b>Comments</b>			

## Water Production Information

<b>Date</b>	05/22/2017	<b>Start Time</b>	
<b>Aquifer</b>	Unknown		
<b>Static Water Level</b>	14.00 ft	<b>Yield</b>	750 gallons per minute
<b>Pumping Water Level</b>	23 ft	<b>Yield Method</b>	Estimate
<b>Measurement</b>	Electric Line	<b>Pump Test</b>	No
<b>Pump Method</b>	Unknown	<b>Duration</b>	0 mins
<b>Comments</b>			

<https://www.iuhr.uiowa.edu/igs/geosam/well/86202/general-information>