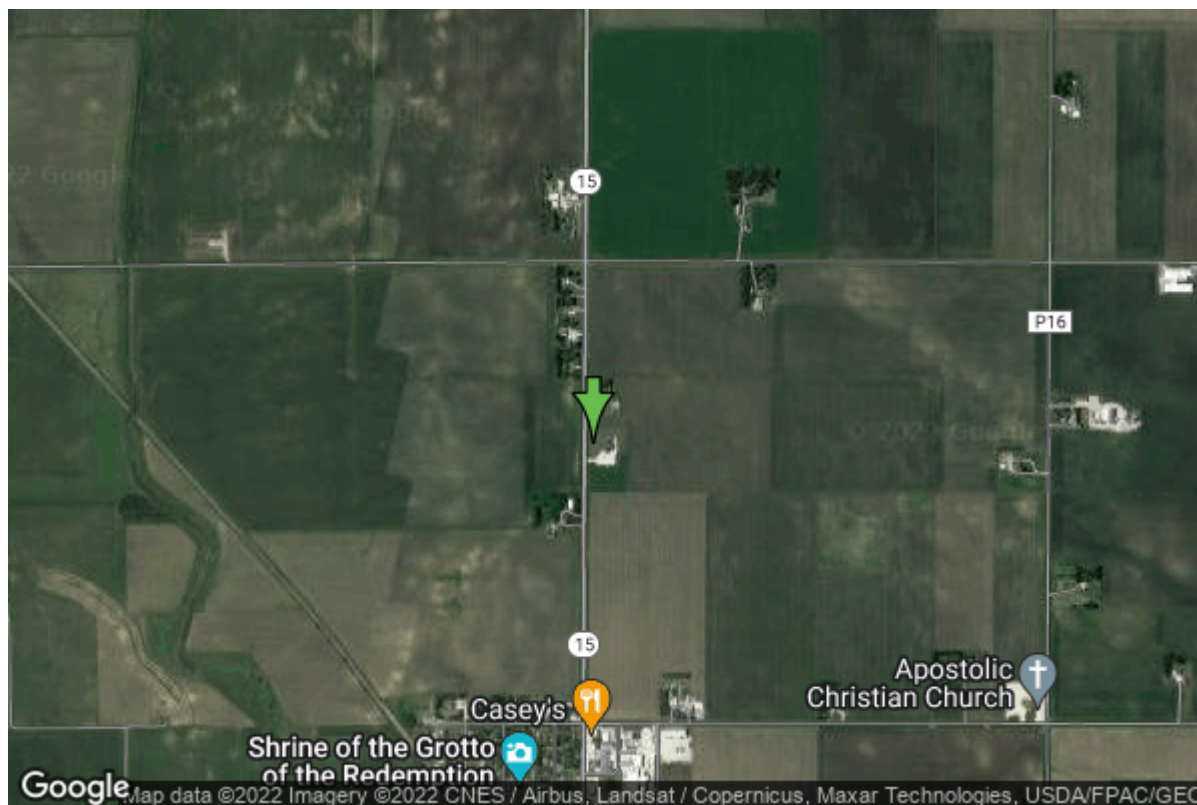


# Well W#86267 Information



<b>Date Received</b>	10/03/2017	<b>State</b>	Iowa
<b>Owner Name</b>	Apostolic Christian Faith Church	<b>County</b>	Kossuth
<b>Alt Name</b>		<b>Quadrangle</b>	West Bend, Iowa
<b>WNumber</b>	86267	<b>Township</b>	T94N
<b>PWTS ID</b>	0	<b>Range</b>	R30W
<b>PWS ID</b>	5595801	<b>Section</b>	7
<b>Storet ID</b>	0	<b>Quarter</b>	NW SW SW
<b>SDWIS ID</b>	0	<b>Latitude</b>	42.9746720000
<b>USGS ID</b>	0	<b>Longitude</b>	-94.4418990000
<b>Project Operator</b>		<b>Accuracy</b>	
		<b>UTM X</b>	382424
		<b>UTM Y</b>	4759011

<b>Site Type</b>	Drilled hole	<b>Drilling Company</b>	Elbert Bros Well Drilling
<b>Well Status</b>	Active	<b>Drilling Date</b>	09/20/2017
<b>Field Located</b>	No	<b>Drilling Method</b>	Rotary
<b>Elevation</b>	1192 ft	<b>Bedrock Depth</b>	160 ft
<b>Elevation Accuracy</b>	Topo Map Accurate to 2 ft	<b>Well Depth</b>	178 ft
<b>Landscape Position</b>	Unknown	<b>Total Depth</b>	178 ft
		<b>Well Types</b>	Public Supply
		<b>Aquifers</b>	

## Hole Construction Information

<b>Date</b>	09/20/2017	<b>Depth</b>	178.00 ft
<b>Diameter</b>	10.00 in		

## Comments

# Casing Construction Information

<b>Date</b>	09/20/2017	<b>Casing Type</b>	Steel
<b>Start Depth</b>	-2.00 ft	<b>End Depth</b>	5.00 ft
<b>Diameter</b>	6.00 in	<b>Amount</b>	7.00 ft
<b>Comments</b>	steel pitless unit		

---

<b>Date</b>	09/20/2017	<b>Casing Type</b>	PVC
<b>Start Depth</b>	5.00 ft	<b>End Depth</b>	171.00 ft
<b>Diameter</b>	6.00 in	<b>Amount</b>	166.00 ft
<b>Comments</b>			

# Screen Construction Information

<b>Date</b>	09/20/2017	<b>Slot Size</b>	0.02
<b>Screen Type</b>	Steel	<b>End Depth</b>	176.00 ft
<b>Start Depth</b>	171.00 ft	<b>Amount</b>	5 ft
<b>Diameter</b>	6.00 in		
<b>Comments</b>			

# Grout Construction Information

<b>Date</b>	09/20/2017	<b>Grout Placement</b>	Tremie
<b>Grout Type</b>	Bentonite (Clay)	<b>End Depth</b>	145.00 ft
<b>Start Depth</b>	0.00 ft		
<b>Comments</b>			

# Log Information

<b>Date</b>	09/20/2017		
<b>Log Types</b>	Drillers log		
<b>Prepared By</b>	Elbert Bros Well Drilling		
<b>Comments</b>			

# Formation Information

<b>Formation Color</b>	Black	<b>Formation Lithology</b>	soil or fill
<b>Start Depth</b>	0.00 ft	<b>End Depth</b>	3.00 ft
<b>Comments</b>			

---

<b>Formation Color</b>	Yellow	<b>Formation Lithology</b>	clay
<b>Start Depth</b>	3.00 ft	<b>End Depth</b>	16.00 ft

## Comments

<b>Formation Color</b>	Gray	<b>Formation Lithology</b>	clay
<b>Start Depth</b>	16.00 ft	<b>End Depth</b>	50.00 ft
<b>Comments</b>			
<b>Formation Color</b>	Gray	<b>Formation Lithology</b>	clay and gravel
<b>Start Depth</b>	50.00 ft	<b>End Depth</b>	72.00 ft
<b>Comments</b>			
<b>Formation Color</b>	Gray	<b>Formation Lithology</b>	clay
<b>Start Depth</b>	72.00 ft	<b>End Depth</b>	103.00 ft
<b>Comments</b>			
<b>Formation Color</b>	Clear	<b>Formation Lithology</b>	sand
<b>Start Depth</b>	103.00 ft	<b>End Depth</b>	106.00 ft
<b>Comments</b>			
<b>Formation Color</b>	Gray	<b>Formation Lithology</b>	clay
<b>Start Depth</b>	106.00 ft	<b>End Depth</b>	160.00 ft
<b>Comments</b>			
<b>Formation Color</b>	White	<b>Formation Lithology</b>	limestone
<b>Start Depth</b>	160.00 ft	<b>End Depth</b>	161.00 ft
<b>Comments</b>			
<b>Formation Color</b>	Gray	<b>Formation Lithology</b>	clay
<b>Start Depth</b>	161.00 ft	<b>End Depth</b>	165.00 ft
<b>Comments</b>			
<b>Formation Color</b>	White	<b>Formation Lithology</b>	limestone
<b>Start Depth</b>	165.00 ft	<b>End Depth</b>	167.00 ft
<b>Comments</b>			
<b>Formation Color</b>	Clear	<b>Formation Lithology</b>	sandstone
<b>Start Depth</b>	167.00 ft	<b>End Depth</b>	178.00 ft
<b>Comments</b>			

## Water Production Information

<b>Date</b>	09/20/2017	<b>Start Time</b>	
<b>Aquifer</b>	Unknown	<b>Yield</b>	30 gallons per minute
<b>Static Water Level</b>	51.00 ft	<b>Yield Method</b>	Volumetric
<b>Pumping Water Level</b>	56 ft	<b>Pump Test</b>	No
<b>Measurement</b>	Tape	<b>Duration</b>	0 mins
<b>Pump Method</b>	Unknown		
<b>Comments</b>			

# Chip Storage Information

<b>Date</b>	06/18/2018	<b>Bin</b>	
<b>Storage</b>	OD7-700	<b>Number of Samples</b>	37
<b>Number of Boxes</b>	1	<b>Sample Gaps</b>	
<b>Sample Intervals</b>	5	<b>Sample Bottom</b>	178 ft
<b>Sample Top</b>	0 ft	<b>Washed Bottom</b>	0 ft
<b>Washed Top</b>	0 ft		
<b>Duplicate Storage</b>			
<b>Comments</b>			

<https://www.iihr.uiowa.edu/igs/geosam/well/86267/general-information>