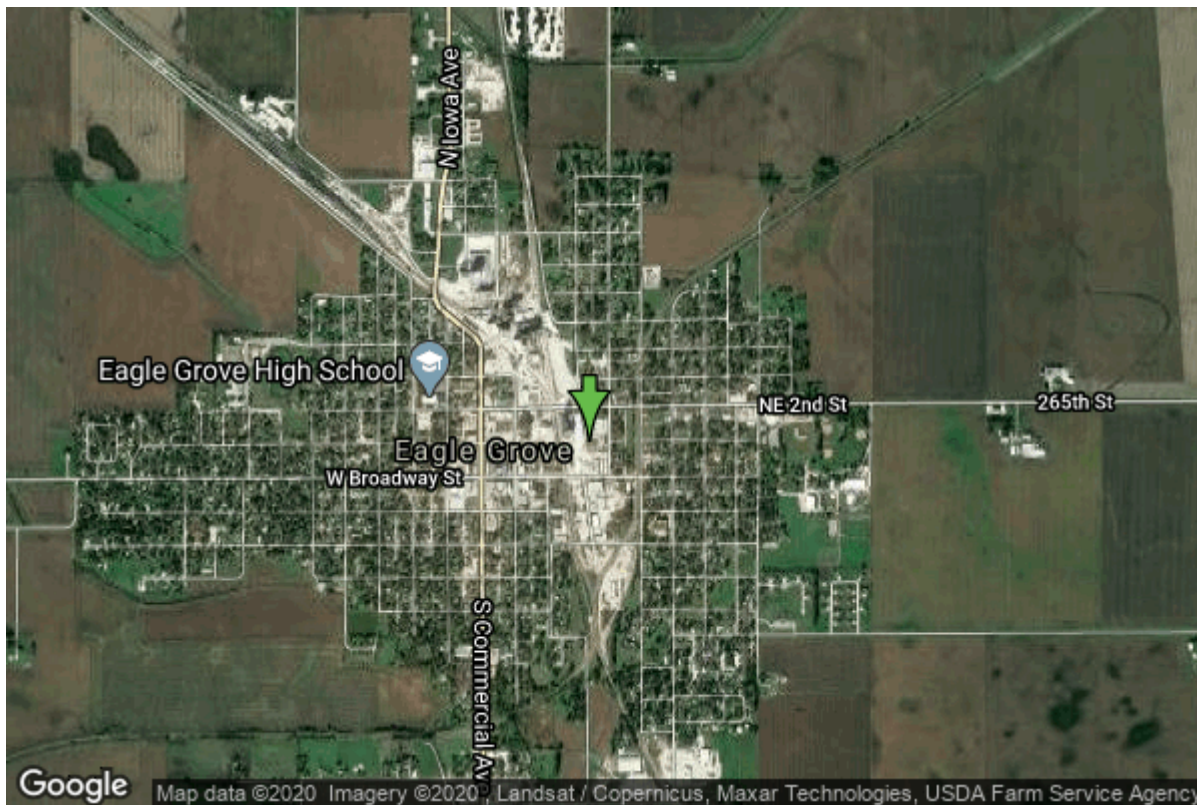


Well W#8847 Information



Date Received		State	Iowa
Owner Name	Eagle Grove, City Of	County	Wright
Alt Name		Quadrangle	Eagle Grove, Iowa
WNumber	8847	Township	T91N
PWTS ID	0	Range	R26W
PWS ID	9926096	Section	27
Storet ID	0	Quarter	SE NW NE
SDWIS ID	2411798	Latitude	42.6651800000
USGS ID	0	Longitude	-93.8991200000
Project	Source Water Protection	Accuracy	
Operator	Unknown	UTM X	426317
		UTM Y	4724027

Site Type	Drilled hole	Drilling Company	Thorpe Well Co.
Well Status	Active	Drilling Date	08/02/1957
Field Located	No	Drilling Method	Cable
Elevation	1111 ft	Bedrock Depth	150 ft
Elevation Accuracy	Digital Elevation Model	Well Depth	450 ft
	Accurate to 5 ft	Total Depth	450 ft
Landscape Position	Level Surface	Well Types	Municipal, Public Supply
		Aquifers	Devonian, Mississippian

Casing Construction Information

Date	08/02/1957	Casing Type	Steel
Start Depth	-1.60 ft	End Depth	169.90 ft

Diameter	16.00 in	Amount	171.50 ft
Comments			

Grout Construction Information

Date	08/02/1957		
Grout Type	Cement	Grout Placement	Unknown
Start Depth	45.00 ft	End Depth	169.00 ft
Comments			

Log Information

Date	02/17/1958
Log Types	Strip log
Prepared By	Unknown
Comments	

Date	
Log Types	Drillers log
Prepared By	Unknown
Comments	

Stratigraphy Information

System	Quaternary		
Series			
Group			
Formation			
Member			
Submember			
Start Depth	0.00 ft	End Depth	5.00 ft
Contact Accuracy			
Penetration			
Primary Lithology	Soil Or Fill	Percent	100
Secondary Lithology		Percent	
Tertiary Lithology		Percent	
Comments			

System	Quaternary		
Series	Pleistocene Series		
Group			
Formation			
Member			
Submember			
Start Depth	5.00 ft	End Depth	150.00 ft
Contact Accuracy			

Penetration			
Primary Lithology	Till	Percent	0
Secondary Lithology	Sand And Gravel	Percent	0
Tertiary Lithology		Percent	
Comments			

System	Mississippian (Subsystem Of Carboniferous System)		
Series			
Group	Sub-Augusta		
Formation	Gilmore City		
Member			
Submember			
Start Depth	150.00 ft	End Depth	255.00 ft
Contact Accuracy			
Penetration			
Primary Lithology	Limestone	Percent	0
Secondary Lithology	Dolomite	Percent	0
Tertiary Lithology	Unknown	Percent	0
Comments			

System	Mississippian (Subsystem Of Carboniferous System)		
Series			
Group	Sub-Augusta		
Formation	Gilmore City		
Member	Iowa Falls Dolomite		
Submember			
Start Depth	255.00 ft	End Depth	270.00 ft
Contact Accuracy			
Penetration			
Primary Lithology	Dolomite	Percent	0
Secondary Lithology	Limestone	Percent	0
Tertiary Lithology		Percent	
Comments			

System	Mississippian (Subsystem Of Carboniferous System)		
Series			
Group	Sub-Augusta		
Formation	Maynes Creek		
Member	Eagle City		
Submember			
Start Depth	270.00 ft	End Depth	303.00 ft
Contact Accuracy			
Penetration			
Primary Lithology	Limestone	Percent	0
Secondary Lithology	Dolomite	Percent	0
Tertiary Lithology		Percent	
Comments			

System	Mississippian (Subsystem Of Carboniferous System)		
---------------	---	--	--

Series			
Group	Sub-Augusta		
Formation	Maynes Creek		
Member			
Submember			
Start Depth	303.00 ft	End Depth	405.00 ft
Contact Accuracy			
Penetration			
Primary Lithology	Dolomite	Percent	0
Secondary Lithology	Chert/Chalcedony	Percent	0
Tertiary Lithology		Percent	
Comments			

System	Mississippian (Subsystem Of Carboniferous System)		
Series			
Group	North Hill		
Formation	Chapin		
Member			
Submember			
Start Depth	405.00 ft	End Depth	425.00 ft
Contact Accuracy			
Penetration			
Primary Lithology	Dolomite	Percent	0
Secondary Lithology	Limestone	Percent	0
Tertiary Lithology		Percent	
Comments			

System	Mississippian (Subsystem Of Carboniferous System)		
Series			
Group	North Hill		
Formation	Prospect Hill		
Member			
Submember			
Start Depth	425.00 ft	End Depth	435.00 ft
Contact Accuracy			
Penetration			
Primary Lithology	Dolomite	Percent	100
Secondary Lithology		Percent	
Tertiary Lithology		Percent	
Comments			

System	Devonian		
Series			
Group	Yellow Spring (New Albany)		
Formation	Maple Mill		
Member			
Submember			
Start Depth	435.00 ft	End Depth	440.00 ft
Contact Accuracy			

Penetration			
Primary Lithology	Shale	Percent	100
Secondary Lithology		Percent	
Tertiary Lithology		Percent	
Comments			
<hr/>			
System	Devonian		
Series			
Group	Yellow Spring (New Albany)		
Formation	Lime Creek		
Member			
Submember			
Start Depth	440.00 ft	End Depth	450.00 ft
Contact Accuracy			
Penetration			
Primary Lithology	Dolomite	Percent	0
Secondary Lithology	Shale	Percent	0
Tertiary Lithology		Percent	
Comments			

Water Production Information

Date	08/02/1957	Start Time	
Aquifer	Unknown		
Static Water Level	5.00 ft	Yield	882 gallons per minute
Pumping Water Level	93 ft	Yield Method	Unknown
Measurement	Unknown	Pump Test	No
Pump Method	Unknown	Duration	0 mins
Comments			

Chip Storage Information

Date	09/17/1957		
Storage	WK10-13	Bin	
Number of Boxes	1	Number of Samples	67
Sample Intervals	5	Sample Gaps	0-105,200-205,240-45,26 0-265,435-40,445-50
Sample Top	105 ft	Sample Bottom	445 ft
Washed Top	150 ft	Washed Bottom	445 ft
Duplicate Storage			
Comments			

<https://www.iuhr.uiowa.edu/igs/geosam/well/8847/general-information>