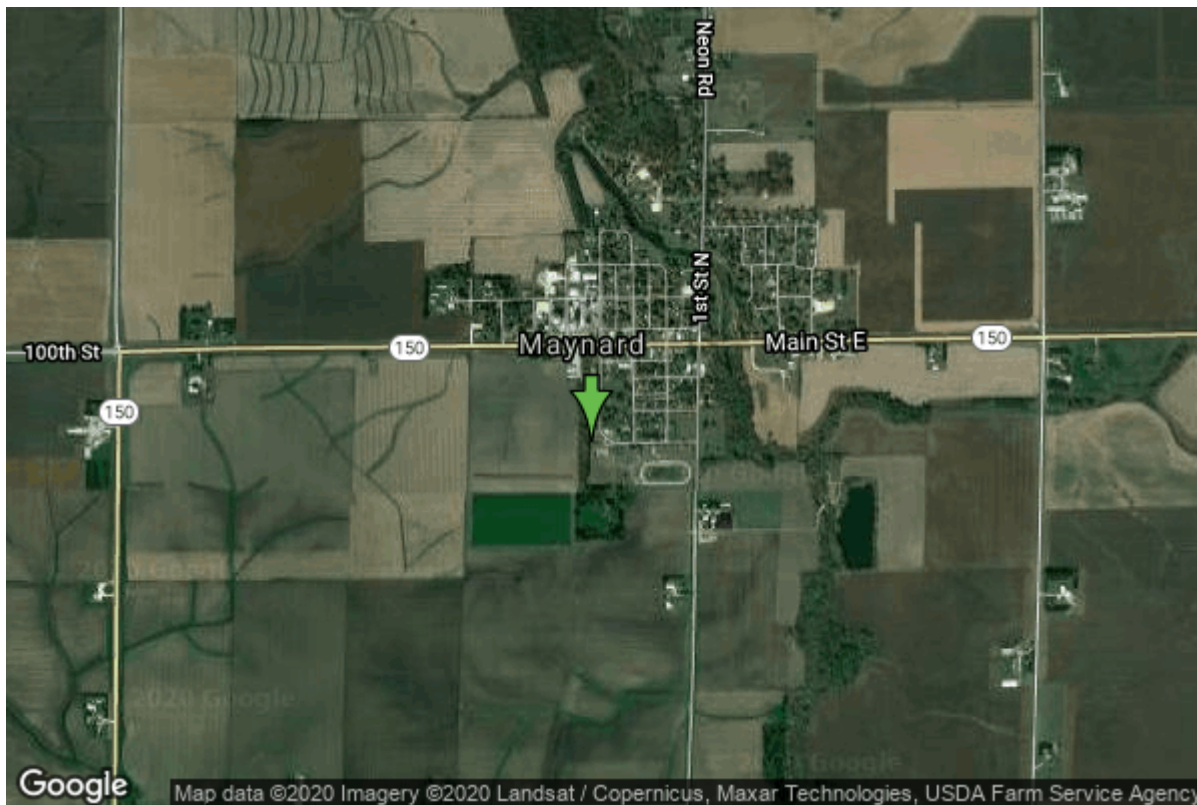


Well W#8873 Information



Date Received		State	Iowa
Owner Name	Maynard, City Of	County	Fayette
Alt Name	#1	Quadrangle	Maynard, Iowa
WNumber	8873	Township	T92N
PWTS ID	0	Range	R9W
PWS ID	3350059	Section	23
Storet ID	0	Quarter	NW NW SW
SDWIS ID	2407896	Latitude	42.7707700000
USGS ID	0	Longitude	-91.8812900000
Project Operator	Source Water Protection Unknown	Accuracy	
		UTM X	591523
		UTM Y	4735966

Site Type	Drilled hole	Drilling Company	Shawver Well Co.
Well Status	Active	Drilling Date	01/01/1959
Field Located	No	Drilling Method	Cable
Elevation	1121 ft	Bedrock Depth	0 ft
Elevation Accuracy	Digital Elevation Model Accurate to 5 ft	Well Depth	850 ft
Landscape Position	Unknown	Total Depth	850 ft
		Well Types	Municipal, Public Supply
		Aquifers	Ordovician

Casing Construction Information

Date	11/01/1959	Casing Type	Steel
Start Depth	0.00 ft	End Depth	435.00 ft

Diameter	8.00 in	Amount	435.00 ft
-----------------	---------	---------------	-----------

Comments

Date	11/01/1959	Casing Type	Steel
Start Depth	683.00 ft	End Depth	793.00 ft
Diameter	6.00 in	Amount	110.00 ft

Comments

Log Information

Date	11/11/1958
Log Types	Strip log
Prepared By	Dorheim, Fred H.

Comments

Date	
Log Types	Drillers log
Prepared By	Maynard, City Of

Comments

Stratigraphy Information

System	Unknown		
Series			
Group			
Formation			
Member			
Submember			
Start Depth	0.00 ft	End Depth	39.00 ft
Contact Accuracy			
Penetration			
Primary Lithology		Percent	
Secondary Lithology		Percent	
Tertiary Lithology		Percent	

Comments

System	Devonian		
Series			
Group	Cedar Valley		
Formation	Little Cedar		
Member	Rapid		
Submember			
Start Depth	39.00 ft	End Depth	45.00 ft
Contact Accuracy			
Penetration			
Primary Lithology	Dolomite	Percent	0
Secondary Lithology	Sandstone	Percent	0

Tertiary Lithology		Percent	
Comments			
System	Devonian		
Series			
Group	Cedar Valley		
Formation	Little Cedar		
Member	Solon		
Submember			
Start Depth	45.00 ft	End Depth	75.00 ft
Contact Accuracy			
Penetration			
Primary Lithology	Limestone	Percent	0
Secondary Lithology	Sandstone	Percent	0
Tertiary Lithology		Percent	
Comments			
System	Devonian		
Series			
Group	Wapsipinicon		
Formation	Pinicon Ridge		
Member	Davenport		
Submember			
Start Depth	75.00 ft	End Depth	90.00 ft
Contact Accuracy			
Penetration			
Primary Lithology	Limestone	Percent	100
Secondary Lithology		Percent	
Tertiary Lithology		Percent	
Comments			
System	Devonian		
Series			
Group	Wapsipinicon		
Formation	Pinicon Ridge		
Member	Spring Grove		
Submember			
Start Depth	90.00 ft	End Depth	100.00 ft
Contact Accuracy			
Penetration			
Primary Lithology	Limestone	Percent	100
Secondary Lithology		Percent	
Tertiary Lithology		Percent	
Comments			
System	Devonian		
Series			
Group	Wapsipinicon		
Formation	Pinicon Ridge		

Member	Kenwood		
Submember			
Start Depth	100.00 ft	End Depth	110.00 ft
Contact Accuracy Penetration			
Primary Lithology	Dolomite	Percent	0
Secondary Lithology	Chert/Chalcedony	Percent	0
Tertiary Lithology		Percent	
Comments			
<hr/>			
System	Silurian		
Series			
Group			
Formation			
Member			
Submember			
Start Depth	110.00 ft	End Depth	200.00 ft
Contact Accuracy Penetration			
Primary Lithology	Dolomite	Percent	0
Secondary Lithology	Chert/Chalcedony	Percent	0
Tertiary Lithology	Shale	Percent	0
Comments			
<hr/>			
System	Ordovician		
Series			
Group			
Formation	Maquoketa		
Member			
Submember			
Start Depth	200.00 ft	End Depth	422.00 ft
Contact Accuracy Penetration			
Primary Lithology	Shale	Percent	0
Secondary Lithology	Limestone	Percent	0
Tertiary Lithology		Percent	
Comments			
<hr/>			
System	Unknown		
Series			
Group			
Formation			
Member			
Submember			
Start Depth	422.00 ft	End Depth	695.00 ft
Contact Accuracy Penetration			
Primary Lithology	Limestone	Percent	100
Secondary Lithology		Percent	

Tertiary Lithology	Percent		
Comments			
System	Ordovician		
Series			
Group	Galena		
Formation	Decorah/Platteville Undiff.		
Member			
Submember			
Start Depth	695.00 ft	End Depth	783.00 ft
Contact Accuracy			
Penetration			
Primary Lithology	Shale	Percent	100
Secondary Lithology		Percent	
Tertiary Lithology		Percent	
Comments			
System	Ordovician		
Series			
Group	Ancell		
Formation	St. Peter Sandstone		
Member			
Submember			
Start Depth	783.00 ft	End Depth	828.00 ft
Contact Accuracy			
Penetration			
Primary Lithology	Sandstone	Percent	100
Secondary Lithology		Percent	
Tertiary Lithology		Percent	
Comments			
System	Ordovician		
Series			
Group	Prairie Du Chien		
Formation			
Member			
Submember			
Start Depth	828.00 ft	End Depth	850.00 ft
Contact Accuracy			
Penetration			
Primary Lithology	Limestone	Percent	100
Secondary Lithology		Percent	
Tertiary Lithology		Percent	
Comments			

Water Production Information

Date	11/01/1959	Start Time	
Aquifer	Unknown		
Static Water Level	330.00 ft	Yield	100 gallons per minute
Pumping Water Level	420 ft	Yield Method	Unknown
Measurement	Unknown	Pump Test	Yes
Pump Method	Unknown	Duration	0 mins
Comments			

Chip Storage Information

Date		Bin	
Storage	WL10-6	Number of Samples	33
Number of Boxes	1	Sample Gaps	0-39,200-850
Sample Intervals	5	Sample Bottom	200 ft
Sample Top	39 ft	Washed Bottom	0 ft
Washed Top	0 ft		
Duplicate Storage			
Comments			

<https://www.iuhr.uiowa.edu/igs/geosam/well/8873/general-information>