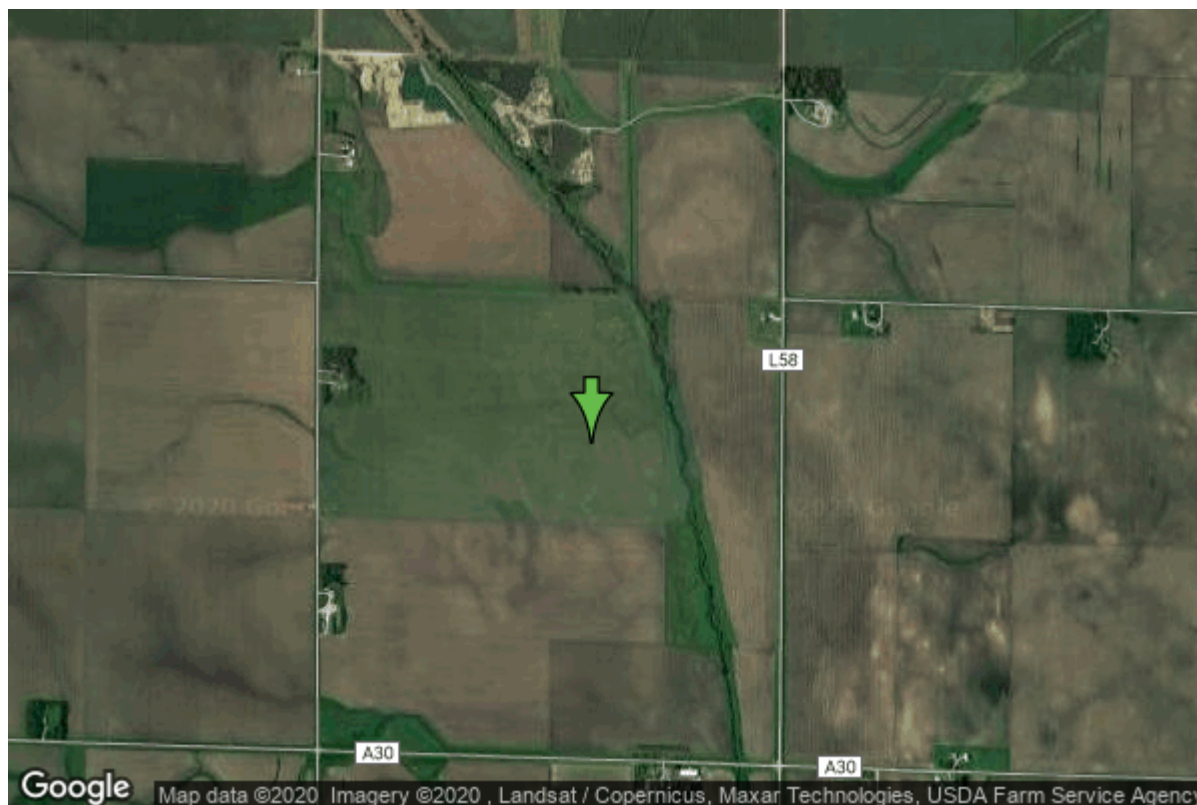


# Well W#88847 Information



<b>Date Received</b>	02/27/2018	<b>State</b>	Iowa
<b>Owner Name</b>	Osceola Co. RWS	<b>County</b>	Osceola
<b>Alt Name</b>	well E1	<b>Quadrangle</b>	Melvin, Iowa
<b>WNumber</b>	88847	<b>Township</b>	T99N
<b>PWTS ID</b>	0	<b>Range</b>	R40W
<b>PWS ID</b>	0	<b>Section</b>	26
<b>Storet ID</b>	0	<b>Quarter</b>	NE SW NW
<b>SDWIS ID</b>	0	<b>Latitude</b>	43.3676940000
<b>USGS ID</b>	0	<b>Longitude</b>	-95.5325000000
<b>Project Operator</b>		<b>Accuracy</b>	
		<b>UTM X</b>	294811
		<b>UTM Y</b>	4804763

<b>Site Type</b>	Drilled hole	<b>Drilling Company</b>	Sargent Drilling
<b>Well Status</b>	Active	<b>Drilling Date</b>	10/23/2017
<b>Field Located</b>	No	<b>Drilling Method</b>	Rotary
<b>Elevation</b>	1458 ft	<b>Bedrock Depth</b>	0 ft
<b>Elevation Accuracy</b>	Topo Map Accurate to 2 ft	<b>Well Depth</b>	70 ft
<b>Landscape Position</b>	Unknown	<b>Total Depth</b>	70 ft
		<b>Well Types</b>	Public Supply
		<b>Aquifers</b>	

## Hole Construction Information

<b>Date</b>	10/23/2017	<b>Depth</b>	70.00 ft
<b>Diameter</b>	24.00 in		

## Comments

# Casing Construction Information

Date	10/23/2017	Casing Type	Steel
Start Depth	0.00 ft	End Depth	38.00 ft
Diameter	12.00 in	Amount	38.00 ft
Comments			

# Screen Construction Information

Date	10/23/2017	Slot Size	0.10
Screen Type	Steel	End Depth	70.00 ft
Start Depth	38.00 ft	Amount	32 ft
Diameter	12.00 in		
Comments			

# Grout Construction Information

Date	10/23/2017	Grout Placement	Unknown
Grout Type	Cement	End Depth	25.00 ft
Start Depth	0.00 ft		
Comments			

---

Date	10/23/2017	Grout Placement	Unknown
Grout Type	Bentonite (Clay)	End Depth	33.00 ft
Start Depth	25.00 ft		
Comments			

# Gravel Pack Construction Information

Date	10/23/2017	Slot Size	
Gravel Pack Type	Northern Gravel	End Depth	70.00 ft
Start Depth	33.00 ft		
Comments			

# Log Information

Date	10/23/2017		
Log Types	Drillers log		
Prepared By	Sargent Drilling		
Comments			

## Formation Information

<b>Formation Color</b>	Brown	<b>Formation Lithology</b>	soil or fill
<b>Start Depth</b>	0.00 ft	<b>End Depth</b>	12.00 ft
<b>Comments</b>			

---

<b>Formation Color</b>	Gray	<b>Formation Lithology</b>	clay
<b>Start Depth</b>	12.00 ft	<b>End Depth</b>	21.00 ft
<b>Comments</b>			

---

<b>Formation Color</b>	Brown	<b>Formation Lithology</b>	sand and gravel
<b>Start Depth</b>	21.00 ft	<b>End Depth</b>	63.00 ft
<b>Comments</b>			

---

<b>Formation Color</b>	Gray	<b>Formation Lithology</b>	clay
<b>Start Depth</b>	63.00 ft	<b>End Depth</b>	65.00 ft
<b>Comments</b>			

---

<b>Formation Color</b>	Gray	<b>Formation Lithology</b>	sand and gravel
<b>Start Depth</b>	65.00 ft	<b>End Depth</b>	67.00 ft
<b>Comments</b>			

---

<b>Formation Color</b>	Gray	<b>Formation Lithology</b>	clay
<b>Start Depth</b>	67.00 ft	<b>End Depth</b>	70.00 ft
<b>Comments</b>			

## Water Production Information

<b>Date</b>	11/10/2017	<b>Start Time</b>	
<b>Aquifer</b>	Unknown		
<b>Static Water Level</b>	14.00 ft	<b>Yield</b>	1100 gallons per minute
<b>Pumping Water Level</b>	27 ft	<b>Yield Method</b>	Orifice
<b>Measurement</b>	Tape	<b>Pump Test</b>	No
<b>Pump Method</b>	Unknown	<b>Duration</b>	0 mins
<b>Comments</b>			

## Chip Storage Information

<b>Date</b>	06/13/2018		
<b>Storage</b>	OD7-694>695	<b>Bin</b>	
<b>Number of Boxes</b>	2	<b>Number of Samples</b>	13
<b>Sample Intervals</b>	5	<b>Sample Gaps</b>	63-70
<b>Sample Top</b>	0 ft	<b>Sample Bottom</b>	63 ft
<b>Washed Top</b>	0 ft	<b>Washed Bottom</b>	0 ft
<b>Duplicate Storage</b>			
<b>Comments</b>			

<https://www.ihr.uiowa.edu/igs/geosam/well/88847/general-information>