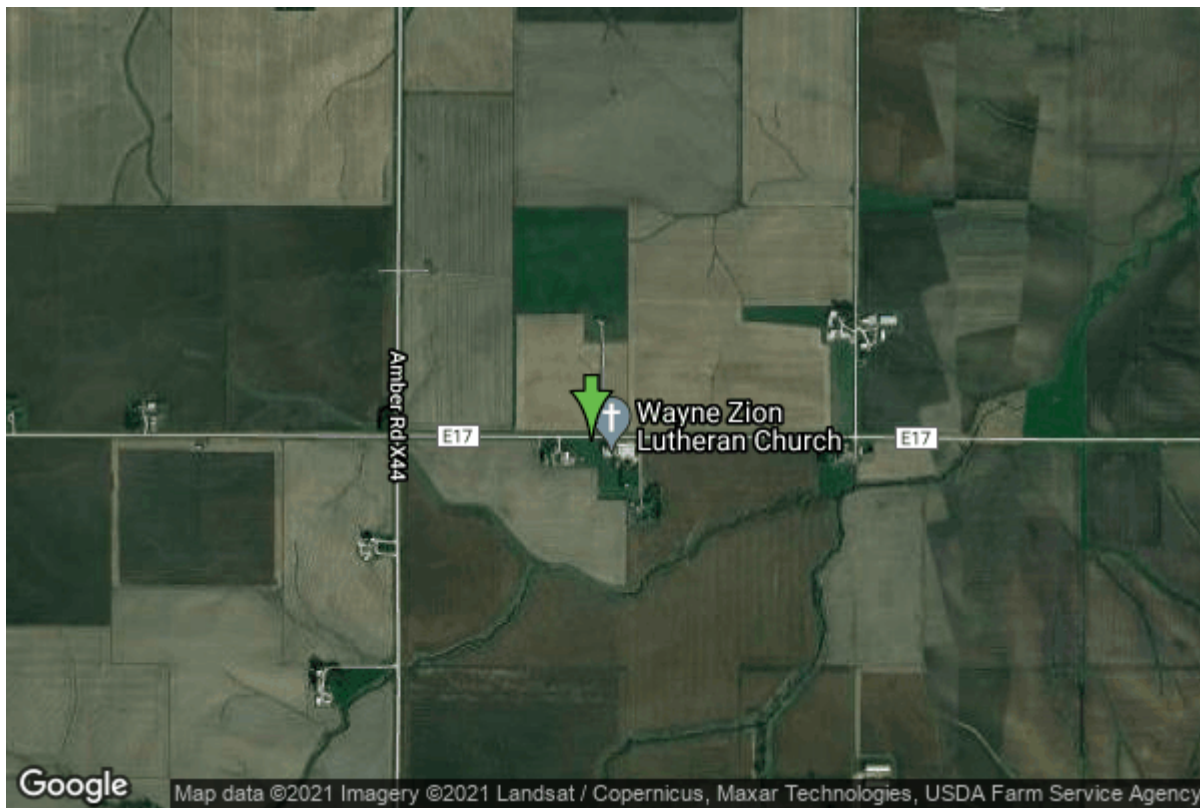


# Well W#88944 Information



<b>Date Received</b>	04/17/2018	<b>State</b>	Iowa
<b>Owner Name</b>	Wayne Zion Lutheran Church	<b>County</b>	Jones
<b>Alt Name</b>	well #2	<b>Quadrangle</b>	Monticello, Iowa
<b>WNumber</b>	88944	<b>Township</b>	T85N
<b>PWTS ID</b>	0	<b>Range</b>	R3W
<b>PWS ID</b>	0	<b>Section</b>	20
<b>Storet ID</b>	0	<b>Quarter</b>	NW NE NE
<b>SDWIS ID</b>	0	<b>Latitude</b>	42.1647869000
<b>USGS ID</b>	0	<b>Longitude</b>	-91.1810036100
<b>Project Operator</b>		<b>Accuracy</b>	
		<b>UTM X</b>	650258
		<b>UTM Y</b>	4669674

<b>Site Type</b>	Drilled hole	<b>Drilling Company</b>	Gingerich Well Co.
<b>Well Status</b>	Active	<b>Drilling Date</b>	04/06/2018
<b>Field Located</b>	No	<b>Drilling Method</b>	Rotary
<b>Elevation</b>	909 ft	<b>Bedrock Depth</b>	85 ft
<b>Elevation Accuracy</b>	Topo Map Accurate to 2 ft	<b>Well Depth</b>	275 ft
<b>Landscape Position</b>	Unknown	<b>Total Depth</b>	275 ft
		<b>Well Types</b>	Public Supply
		<b>Aquifers</b>	

# Hole Construction Information

<b>Date</b>	04/06/2018	<b>Depth</b>	275.00 ft
<b>Diameter</b>	6.00 in		

## Comments

---

Date	04/06/2018	Depth	86.00 ft
Diameter	10.00 in		
Comments			

## Casing Construction Information

Date	04/06/2018	Casing Type	Steel
Start Depth	-1.00 ft	End Depth	86.00 ft
Diameter	6.00 in	Amount	87.00 ft
Comments			

## Grout Construction Information

Date	04/06/2018	Grout Placement	Unknown
Grout Type	Cement	End Depth	86.00 ft
Start Depth	0.00 ft		
Comments			

## Log Information

Date	04/06/2018
Log Types	Drillers log
Prepared By	Gingerich Well Co.
Comments	

## Formation Information

Formation Color	Yellow	Formation Lithology	clay
Start Depth	0.00 ft	End Depth	20.00 ft
Comments			

---

Formation Color	Gray	Formation Lithology	clay
Start Depth	20.00 ft	End Depth	48.00 ft
Comments			

---

Formation Color	Yellow	Formation Lithology	limestone
Start Depth	40.00 ft	End Depth	275.00 ft
Comments			

## Water Production Information

<b>Date</b>	04/06/2018	<b>Start Time</b>	
<b>Aquifer</b>	Unknown		
<b>Static Water Level</b>	38.00 ft	<b>Yield</b>	40 gallons per minute
<b>Pumping Water Level</b>	72 ft	<b>Yield Method</b>	Estimate
<b>Measurement</b>	Estimate	<b>Pump Test</b>	No
<b>Pump Method</b>	Unknown	<b>Duration</b>	0 mins
<b>Comments</b>			

## Chip Storage Information

<b>Date</b>	06/12/2018		
<b>Storage</b>	OD7-695	<b>Bin</b>	
<b>Number of Boxes</b>	1	<b>Number of Samples</b>	55
<b>Sample Intervals</b>	5	<b>Sample Gaps</b>	
<b>Sample Top</b>	0 ft	<b>Sample Bottom</b>	275 ft
<b>Washed Top</b>	85 ft	<b>Washed Bottom</b>	275 ft
<b>Duplicate Storage</b>			
<b>Comments</b>			

<https://www.iihr.uiowa.edu/igs/geosam/well/88944/general-information>