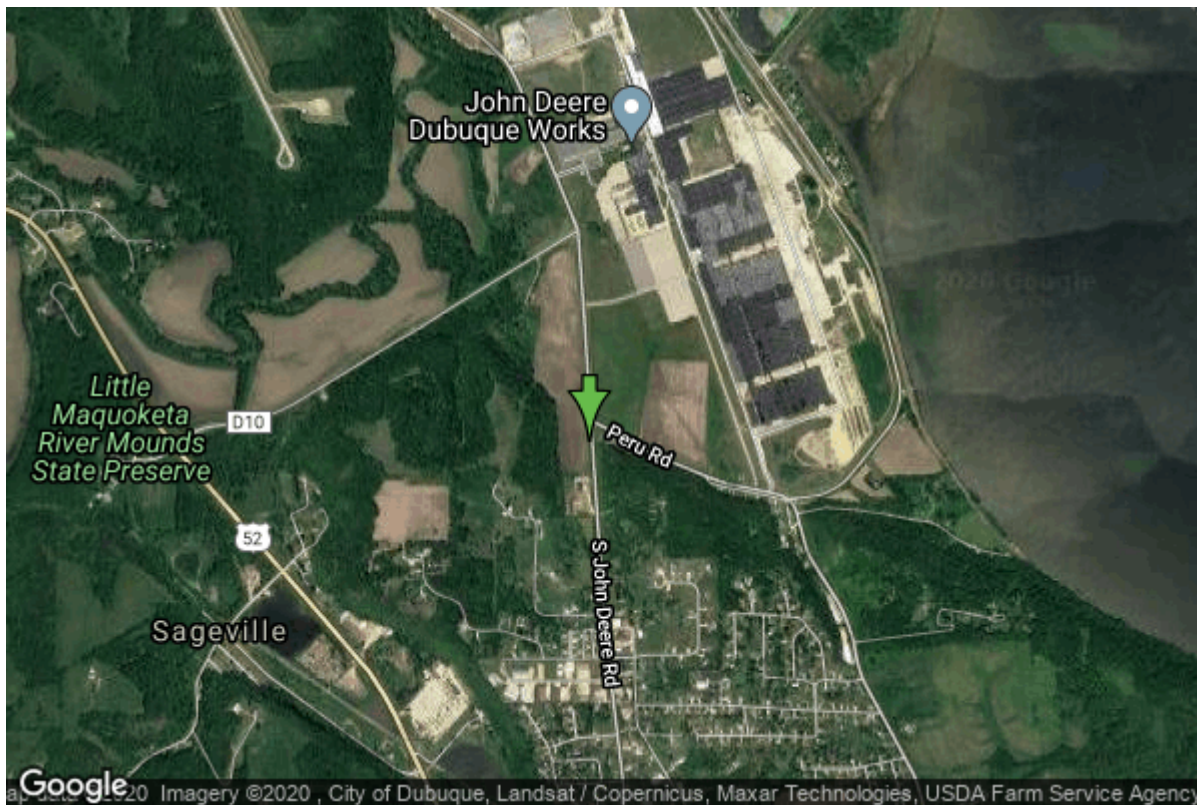


Well W#88953 Information



| | | | |
|----------------------|--------------------------|-------------------|-------------------------------|
| Date Received | 04/23/2018 | State | Iowa |
| Owner Name | Dutrac Comm Credit Union | County | Dubuque |
| Alt Name | | Quadrangle | Dubuque North, Iowa-Wis.-Ill. |
| WNumber | 88953 | Township | T90N |
| PWTS ID | 0 | Range | R2E |
| PWS ID | 3126213 | Section | 35 |
| Storet ID | 0 | Quarter | SE SW SW |
| SDWIS ID | 0 | Latitude | 42.5587280400 |
| USGS ID | 0 | Longitude | -90.6924179600 |
| Project | | Accuracy | |
| Operator | | UTM X | 689432 |
| | | UTM Y | 4714395 |

| | | | |
|---------------------------|---------------------------|-------------------------|---------------------|
| Site Type | Drilled hole | Drilling Company | Oasis Well Drilling |
| Well Status | Active | Drilling Date | 04/02/2018 |
| Field Located | No | Drilling Method | Rotary |
| Elevation | 668 ft | Bedrock Depth | 1 ft |
| Elevation Accuracy | Topo Map Accurate to 2 ft | Well Depth | 373 ft |
| Landscape Position | Unknown | Total Depth | 373 ft |
| | | Well Types | Public Supply |
| | | Aquifers | |

Hole Construction Information

| | | | |
|----------|------------|-------|-----------|
| Date | 04/02/2018 | Depth | 373.00 ft |
| Diameter | 6.00 in | | |
| Comments | | | |

| | | | |
|----------|------------|-------|-----------|
| Date | 04/02/2018 | Depth | 270.00 ft |
| Diameter | 13.00 in | | |
| Comments | | | |

| | | | |
|----------|------------|-------|----------|
| Date | 04/02/2018 | Depth | 40.00 ft |
| Diameter | 17.00 in | | |
| Comments | | | |

| | | | |
|----------|------------|-------|---------|
| Date | 04/02/2018 | Depth | 2.00 ft |
| Diameter | 28.00 in | | |
| Comments | | | |

Casing Construction Information

| | | | |
|-------------|------------|-------------|-----------|
| Date | 04/02/2018 | Casing Type | Steel |
| Start Depth | -2.00 ft | End Depth | 270.00 ft |
| Diameter | 6.00 in | Amount | 272.00 ft |
| Comments | | | |

Grout Construction Information

| | | | |
|-------------|------------|-----------------|------------|
| Date | 04/02/2018 | Grout Placement | Haliburton |
| Grout Type | Cement | End Depth | 0.00 ft |
| Start Depth | 0.00 ft | | |
| Comments | | | |

Log Information

| | |
|-------------|---------------------|
| Date | 04/02/2018 |
| Log Types | Drillers log |
| Prepared By | Oasis Well Drilling |
| Comments | |

| | |
|-------------|---------------------|
| Date | 04/02/2018 |
| Log Types | Pump Test |
| Prepared By | Oasis Well Drilling |
| Comments | |

Formation Information

| | | | |
|------------------------|----------------------|----------------------------|---------------------|
| Formation Color | No Color Noted | Formation Lithology | limestone |
| Start Depth | 0.00 ft | End Depth | 43.00 ft |
| Comments | | | |
| Formation Color | No Color Noted | Formation Lithology | limestone |
| Start Depth | 43.00 ft | End Depth | 50.00 ft |
| Comments | with clays and shale | | |
| Formation Color | No Color Noted | Formation Lithology | limestone |
| Start Depth | 50.00 ft | End Depth | 55.00 ft |
| Comments | | | |
| Formation Color | Gray | Formation Lithology | limestone |
| Start Depth | 55.00 ft | End Depth | 80.00 ft |
| Comments | | | |
| Formation Color | Gray/Brownish | Formation Lithology | limestone |
| Start Depth | 80.00 ft | End Depth | 107.00 ft |
| Comments | | | |
| Formation Color | Blue | Formation Lithology | shale |
| Start Depth | 107.00 ft | End Depth | 108.00 ft |
| Comments | | | |
| Formation Color | Orange | Formation Lithology | sandstone |
| Start Depth | 108.00 ft | End Depth | 139.00 ft |
| Comments | | | |
| Formation Color | Blue | Formation Lithology | shale and sandstone |
| Start Depth | 139.00 ft | End Depth | 142.00 ft |
| Comments | | | |
| Formation Color | White | Formation Lithology | sandstone |
| Start Depth | 142.00 ft | End Depth | 151.00 ft |
| Comments | | | |
| Formation Color | Gray | Formation Lithology | shale |
| Start Depth | 151.00 ft | End Depth | 153.00 ft |
| Comments | | | |
| Formation Color | Tan | Formation Lithology | limestone |
| Start Depth | 153.00 ft | End Depth | 260.00 ft |
| Comments | | | |

| | | | |
|------------------------|-----------|----------------------------|-----------|
| Formation Color | Tan | Formation Lithology | limestone |
| Start Depth | 260.00 ft | End Depth | 299.00 ft |
| Comments | | | |
| Formation Color | Gray | Formation Lithology | limestone |
| Start Depth | 299.00 ft | End Depth | 306.00 ft |
| Comments | | | |
| Formation Color | Tan | Formation Lithology | limestone |
| Start Depth | 306.00 ft | End Depth | 318.00 ft |
| Comments | | | |
| Formation Color | Gray | Formation Lithology | limestone |
| Start Depth | 318.00 ft | End Depth | 328.00 ft |
| Comments | | | |
| Formation Color | Tan | Formation Lithology | limestone |
| Start Depth | 328.00 ft | End Depth | 373.00 ft |
| Comments | | | |

Water Production Information

| | | | |
|----------------------------|------------|---------------------|-----------------------|
| Date | 04/02/2018 | Start Time | |
| Aquifer | Unknown | Yield | 25 gallons per minute |
| Static Water Level | 70.00 ft | Yield Method | Unknown |
| Pumping Water Level | 280 ft | Pump Test | No |
| Measurement | Unknown | Duration | 0 mins |
| Pump Method | Unknown | | |
| Comments | | | |

Chip Storage Information

| | | | |
|--------------------------|-------------|--------------------------|----------------|
| Date | 06/17/2019 | Bin | |
| Storage | OD7-861>862 | Number of Samples | 38 |
| Number of Boxes | 2 | Sample Gaps | 145-55; 165-75 |
| Sample Intervals | 10 | Sample Bottom | 373 ft |
| Sample Top | 0 ft | Washed Bottom | 373 ft |
| Washed Top | 0 ft | | |
| Duplicate Storage | | | |
| Comments | | | |

<https://www.iuhr.uiowa.edu/igs/geosam/well/88953/general-information>