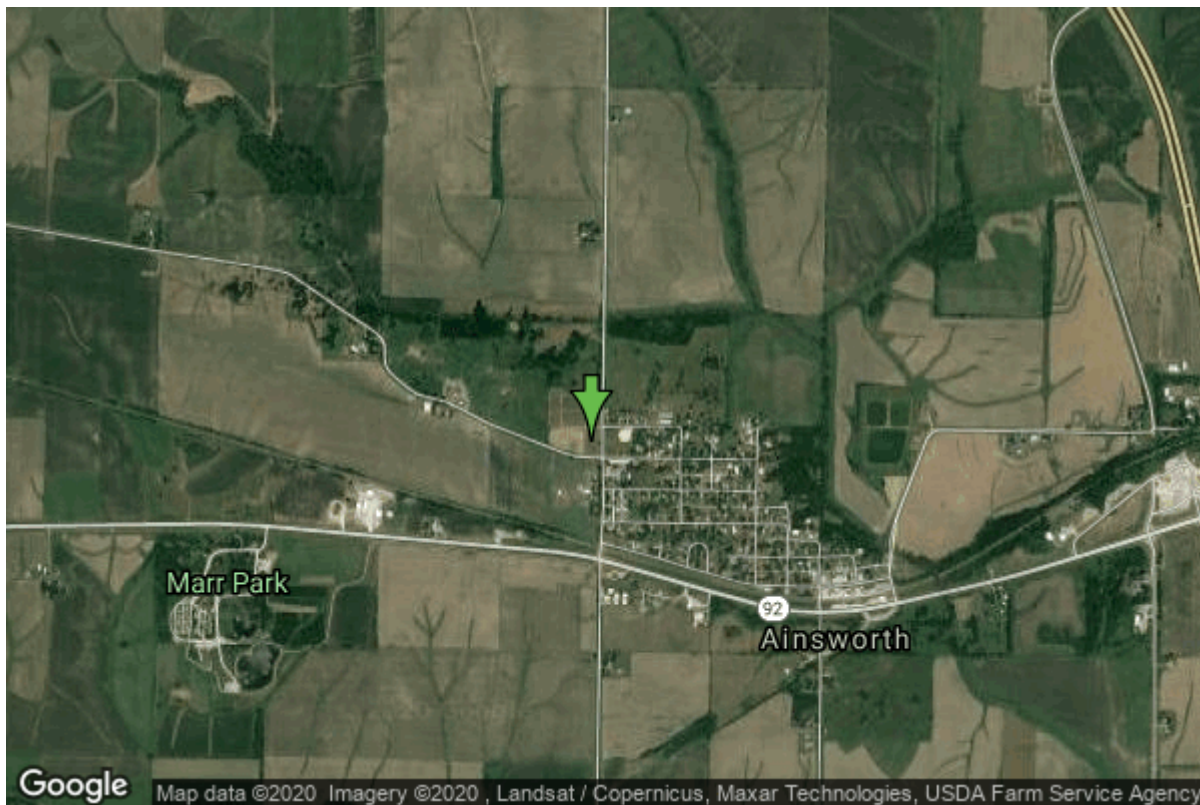


Well W#89237 Information



Date Received	06/14/2018	State	Iowa
Owner Name	Ainsworth, City of	County	Washington
Alt Name		Quadrangle	Ainsworth, Iowa
WNumber	89237	Township	T75N
PWTS ID	0	Range	R6W
PWS ID	0	Section	21
Storet ID	0	Quarter	NW NW NW
SDWIS ID	0	Latitude	41.2932510000
USGS ID	0	Longitude	-91.5613410000
Project		Accuracy	
Operator		UTM X	620456
		UTM Y	4572310

Site Type	Drilled hole	Drilling Company	Gingerich Well Co.
Well Status	Active	Drilling Date	05/09/2018
Field Located	No	Drilling Method	Rotary
Elevation	745 ft	Bedrock Depth	145 ft
Elevation Accuracy	Topo Map Accurate to 2 ft	Well Depth	1820 ft
Landscape Position	Unknown	Total Depth	1820 ft
		Well Types	Public Supply
		Aquifers	

Hole Construction Information

Date	05/09/2018	Depth	1820.00 ft
Diameter	8.00 in		

Comments

Date	05/09/2018		
Diameter	12.00 in	Depth	1325.00 ft
Comments			

Date	05/09/2018		
Diameter	17.50 in	Depth	160.00 ft
Comments			

Casing Construction Information

Date	05/09/2018	Casing Type	Steel
Start Depth	-2.00 ft	End Depth	1325.00 ft
Diameter	8.00 in	Amount	1327.00 ft
Comments			

Date	05/09/2018	Casing Type	Steel
Start Depth	-2.00 ft	End Depth	160.00 ft
Diameter	12.00 in	Amount	162.00 ft
Comments			

Grout Construction Information

Date	05/09/2018		
Grout Type	Cement	Grout Placement	Unknown
Start Depth	0.00 ft	End Depth	160.00 ft
Comments			

Date	05/09/2018		
Grout Type	Cement	Grout Placement	Unknown
Start Depth	0.00 ft	End Depth	1325.00 ft
Comments			

Log Information

Date	05/09/2018		
Log Types	Drillers log		
Prepared By	Gingerich Well Co.		
Comments			

Formation Information

Formation Color	Brown	Formation Lithology	clay
Start Depth	0.00 ft	End Depth	45.00 ft

Comments

Formation Color	Brown	Formation Lithology	clay
Start Depth	45.00 ft	End Depth	50.00 ft
Comments			

Formation Color	Brown	Formation Lithology	clay
Start Depth	50.00 ft	End Depth	60.00 ft
Comments			

Formation Color	Brown	Formation Lithology	sand
Start Depth	60.00 ft	End Depth	65.00 ft
Comments			

Formation Color	Brown	Formation Lithology	clay
Start Depth	65.00 ft	End Depth	115.00 ft
Comments			

Formation Color	Blue	Formation Lithology	clay
Start Depth	115.00 ft	End Depth	145.00 ft
Comments			

Formation Color	Brown	Formation Lithology	limestone
Start Depth	145.00 ft	End Depth	220.00 ft
Comments			

Formation Color	Gray/Brownish	Formation Lithology	shale
Start Depth	220.00 ft	End Depth	555.00 ft
Comments			

Formation Color	Gray/Brownish	Formation Lithology	limestone
Start Depth	555.00 ft	End Depth	690.00 ft
Comments			

Formation Color	Gray/Greenish	Formation Lithology	shale
Start Depth	690.00 ft	End Depth	720.00 ft
Comments			

Formation Color	Brown/Grayish	Formation Lithology	limestone
Start Depth	720.00 ft	End Depth	960.00 ft
Comments			

Formation Color	Tan	Formation Lithology	limestone
Start Depth	960.00 ft	End Depth	1150.00 ft
Comments			

Formation Color	Brown	Formation Lithology	limestone
------------------------	-------	----------------------------	-----------

Start Depth	1150.00 ft	End Depth	1210.00 ft
Comments			
Formation Color	Green	Formation Lithology	shale
Start Depth	1210.00 ft	End Depth	1240.00 ft
Comments			
Formation Color	White	Formation Lithology	sandstone
Start Depth	1240.00 ft	End Depth	1265.00 ft
Comments			
Formation Color	Brown	Formation Lithology	limestone
Start Depth	1265.00 ft	End Depth	1600.00 ft
Comments			
Formation Color	White	Formation Lithology	limestone
Start Depth	1600.00 ft	End Depth	1685.00 ft
Comments			
Formation Color	Gray	Formation Lithology	limestone
Start Depth	1685.00 ft	End Depth	1750.00 ft
Comments			
Formation Color	Tan	Formation Lithology	limestone
Start Depth	1750.00 ft	End Depth	1785.00 ft
Comments			
Formation Color	White	Formation Lithology	sandstone
Start Depth	1785.00 ft	End Depth	1815.00 ft
Comments			
Formation Color	White	Formation Lithology	limestone
Start Depth	1815.00 ft	End Depth	1820.00 ft
Comments			

Water Production Information

Date	05/09/2018	Start Time	
Aquifer	Cambrian-Ordovician	Yield	200 gallons per minute
Static Water Level	290.00 ft	Yield Method	Orifice
Pumping Water Level	300 ft	Pump Test	No
Measurement	Airline	Duration	0 mins
Pump Method	Unknown		
Comments			

Chip Storage Information

Date	06/18/2018	Bin	
Storage	OD7-701>705	Number of Samples	363
Number of Boxes	5	Sample Gaps	890-95
Sample Intervals	5	Sample Bottom	1820 ft
Sample Top	0 ft	Washed Bottom	1820 ft
Washed Top	145 ft		
Duplicate Storage			
Comments			

<https://www.iihr.uiowa.edu/igs/geosam/well/89237/general-information>