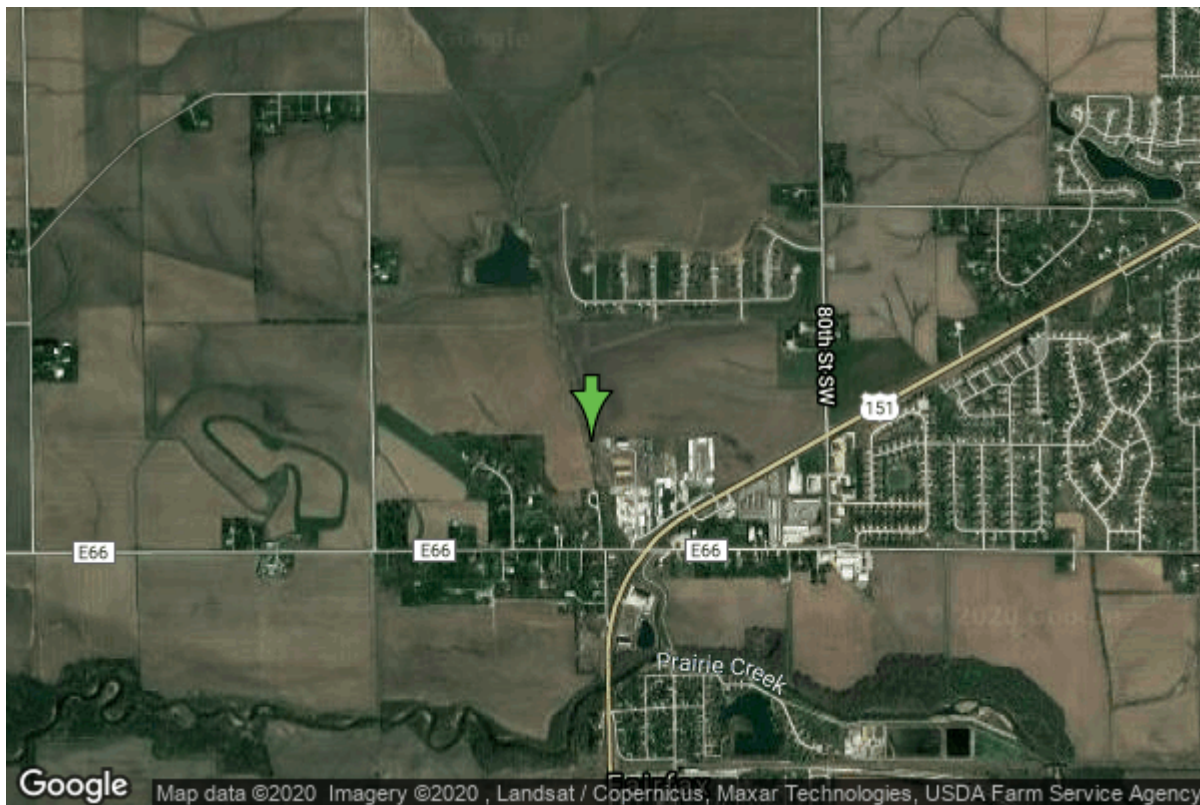


# Well W#89605 Information



<b>Date Received</b>	09/04/2018	<b>State</b>	Iowa
<b>Owner Name</b>	Sobaski, Justin	<b>County</b>	Linn
<b>Alt Name</b>	Eastern Iowa Building	<b>Quadrangle</b>	Fairfax, Iowa
<b>WNumber</b>	89605	<b>Township</b>	T82N
<b>PWTS ID</b>	2193969	<b>Range</b>	R8W
<b>PWS ID</b>	5731203	<b>Section</b>	9
<b>Storet ID</b>	0	<b>Quarter</b>	NE SW NW
<b>SDWIS ID</b>	0	<b>Latitude</b>	41.9309140100
<b>USGS ID</b>	0	<b>Longitude</b>	-91.7838889800
<b>Project</b>		<b>Accuracy</b>	
<b>Operator</b>		<b>UTM X</b>	600825
		<b>UTM Y</b>	4642821

<b>Site Type</b>	Drilled hole	<b>Drilling Company</b>	Gingerich Well Co.
<b>Well Status</b>	Active	<b>Drilling Date</b>	04/06/2017
<b>Field Located</b>	No	<b>Drilling Method</b>	Rotary
<b>Elevation</b>	762 ft	<b>Bedrock Depth</b>	48 ft
<b>Elevation Accuracy</b>	Topo Map Accurate to 2 ft	<b>Well Depth</b>	195 ft
<b>Landscape Position</b>	Unknown	<b>Total Depth</b>	195 ft
		<b>Well Types</b>	Livestock, Public Supply
		<b>Aquifers</b>	

## Hole Construction Information

<b>Date</b>	04/06/2017	<b>Depth</b>	195.00 ft
<b>Diameter</b>	6.00 in		

## Comments

---

Date	04/06/2017	Depth	100.00 ft
Diameter	8.50 in		
Comments			

---

Date	04/06/2017	Depth	40.00 ft
Diameter	10.00 in		
Comments			

## Casing Construction Information

Date	04/06/2017	Casing Type	PVC
Start Depth	-1.00 ft	End Depth	100.00 ft
Diameter	6.00 in	Amount	101.00 ft
Comments			

---

Date	04/06/2017	Casing Type	Slotted PVC
Start Depth	135.00 ft	End Depth	195.00 ft
Diameter	4.50 in	Amount	60.00 ft
Comments			

## Grout Construction Information

Date	04/06/2017	Grout Placement	Unknown
Grout Type	Bentonite (Clay)	End Depth	100.00 ft
Start Depth	0.00 ft		
Comments			

## Log Information

Date	04/06/2017		
Log Types	Drillers log		
Prepared By	Gingerich Well Co.		
Comments			

## Formation Information

Formation Color	Yellow	Formation Lithology	sandy clay
Start Depth	0.00 ft	End Depth	4.00 ft
Comments			

---

Formation Color	Yellow	Formation Lithology	sand
Start Depth	4.00 ft	End Depth	29.00 ft
Comments			

<b>Formation Color</b>	Blue	<b>Formation Lithology</b>	clay
<b>Start Depth</b>	29.00 ft	<b>End Depth</b>	48.00 ft
<b>Comments</b>			
<b>Formation Color</b>	Tan	<b>Formation Lithology</b>	limestone
<b>Start Depth</b>	48.00 ft	<b>End Depth</b>	110.00 ft
<b>Comments</b>			
<b>Formation Color</b>	Gray	<b>Formation Lithology</b>	limestone
<b>Start Depth</b>	110.00 ft	<b>End Depth</b>	195.00 ft
<b>Comments</b>			

## Water Production Information

<b>Date</b>	04/06/2017	<b>Start Time</b>	14:00
<b>Aquifer</b>	Unknown	<b>Yield</b>	30 gallons per minute
<b>Static Water Level</b>	20.00 ft	<b>Yield Method</b>	Estimate
<b>Pumping Water Level</b>	60 ft	<b>Pump Test</b>	No
<b>Measurement</b>	Estimate	<b>Duration</b>	0 mins
<b>Pump Method</b>	Unknown		
<b>Comments</b>			

<https://www.ihr.uiowa.edu/igs/geosam/well/89605/general-information>