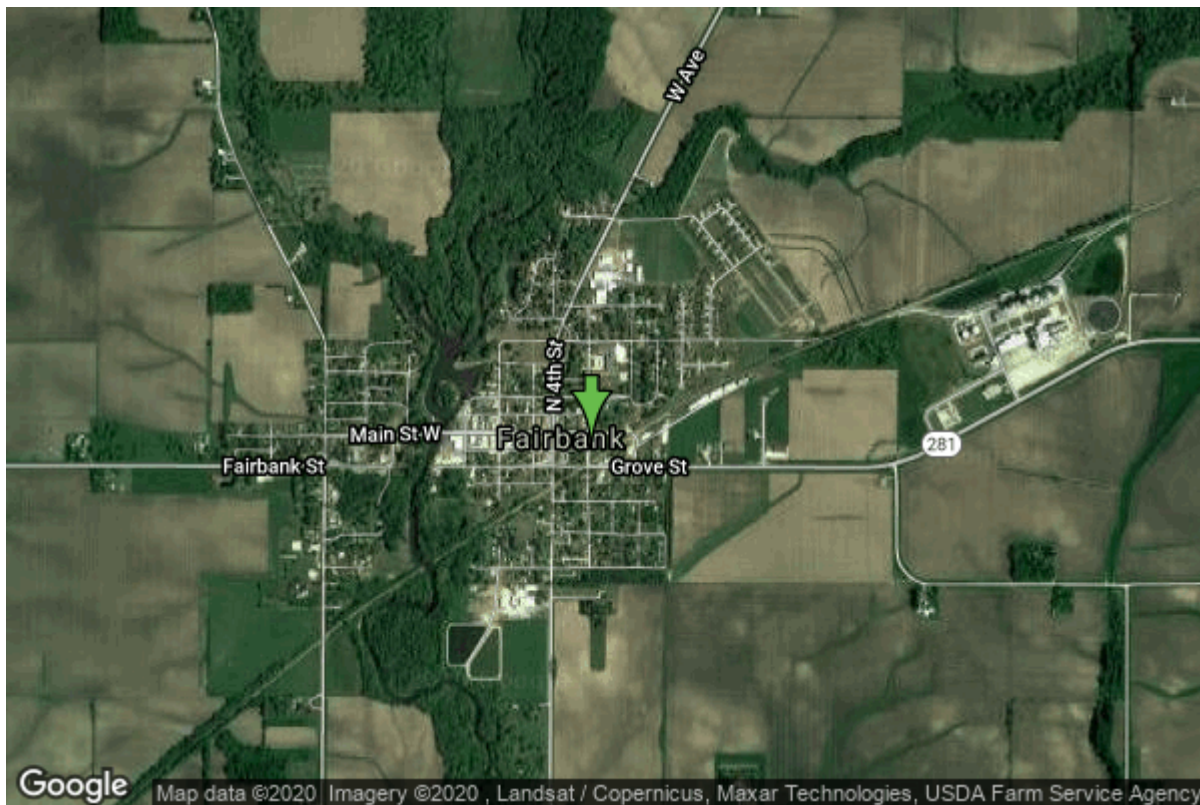


# Well W#9352 Information



<b>Date Received</b>		<b>State</b>	Iowa
<b>Owner Name</b>	Fairbank, City Of	<b>County</b>	Buchanan
<b>Alt Name</b>	#2	<b>Quadrangle</b>	Fairbank, Iowa
<b>WNumber</b>	9352	<b>Township</b>	T90N
<b>PWTS ID</b>	0	<b>Range</b>	R10W
<b>PWS ID</b>	1025031	<b>Section</b>	5
<b>Storet ID</b>	0	<b>Quarter</b>	NE NE SW
<b>SDWIS ID</b>	2412485	<b>Latitude</b>	42.6390050000
<b>USGS ID</b>	0	<b>Longitude</b>	-92.0450640000
<b>Project</b>	Source Water Protection	<b>Accuracy</b>	
<b>Operator</b>	Unknown	<b>UTM X</b>	578290
		<b>UTM Y</b>	4721170

<b>Site Type</b>	Drilled hole	<b>Drilling Company</b>	White & Son
<b>Well Status</b>	Not Used	<b>Drilling Date</b>	05/13/1957
<b>Field Located</b>	No	<b>Drilling Method</b>	Unknown
<b>Elevation</b>	990 ft	<b>Bedrock Depth</b>	0 ft
<b>Elevation Accuracy</b>	Digital Elevation Model Accurate to 5 ft	<b>Well Depth</b>	200 ft
<b>Landscape Position</b>	Unknown	<b>Total Depth</b>	200 ft
		<b>Well Types</b>	Municipal, Public Supply
		<b>Aquifers</b>	Silurian/Devonian

## Casing Construction Information

<b>Date</b>	05/13/1957	<b>Casing Type</b>	Steel
<b>Start Depth</b>	1.50 ft	<b>End Depth</b>	19.00 ft

<b>Diameter</b>	16.00 in	<b>Amount</b>	17.50 ft
-----------------	----------	---------------	----------

---

<b>Date</b>	05/13/1957	<b>Casing Type</b>	Steel
<b>Start Depth</b>	-3.80 ft	<b>End Depth</b>	30.00 ft
<b>Diameter</b>	10.00 in	<b>Amount</b>	33.80 ft

**Comments**

## Log Information

<b>Date</b>	06/22/1959
<b>Log Types</b>	Strip log
<b>Prepared By</b>	Unknown

**Comments**

---

<b>Date</b>	
<b>Log Types</b>	Drillers log
<b>Prepared By</b>	

**Comments**

## Stratigraphy Information

<b>System</b>	Quaternary		
<b>Series</b>	Pleistocene Series		
<b>Group</b>	Pre-Illinoian		
<b>Formation</b>			
<b>Member</b>			
<b>Submember</b>			
<b>Start Depth</b>	0.00 ft	<b>End Depth</b>	17.00 ft
<b>Contact Accuracy</b>			
<b>Penetration</b>			
<b>Primary Lithology</b>	Till	<b>Percent</b>	100
<b>Secondary Lithology</b>		<b>Percent</b>	
<b>Tertiary Lithology</b>		<b>Percent</b>	

**Comments**

---

<b>System</b>	Devonian		
<b>Series</b>			
<b>Group</b>	Cedar Valley		
<b>Formation</b>	Little Cedar		
<b>Member</b>			
<b>Submember</b>			
<b>Start Depth</b>	17.00 ft	<b>End Depth</b>	75.00 ft
<b>Contact Accuracy</b>			
<b>Penetration</b>			
<b>Primary Lithology</b>	Limestone	<b>Percent</b>	0
<b>Secondary Lithology</b>	Sandstone	<b>Percent</b>	0

Tertiary Lithology		Percent	
Comments			
<b>System</b>	Devonian		
<b>Series</b>			
<b>Group</b>	Wapsipinicon		
<b>Formation</b>			
<b>Member</b>			
<b>Submember</b>			
<b>Start Depth</b>	75.00 ft	<b>End Depth</b>	95.00 ft
<b>Contact Accuracy</b>			
<b>Penetration</b>			
<b>Primary Lithology</b>	Limestone	<b>Percent</b>	0
<b>Secondary Lithology</b>	Dolomite	<b>Percent</b>	0
<b>Tertiary Lithology</b>		<b>Percent</b>	
<b>Comments</b>			
<b>System</b>	Devonian		
<b>Series</b>			
<b>Group</b>	Wapsipinicon		
<b>Formation</b>	Pinicon Ridge		
<b>Member</b>	Kenwood		
<b>Submember</b>			
<b>Start Depth</b>	95.00 ft	<b>End Depth</b>	110.00 ft
<b>Contact Accuracy</b>			
<b>Penetration</b>			
<b>Primary Lithology</b>	Dolomite	<b>Percent</b>	0
<b>Secondary Lithology</b>	Shale	<b>Percent</b>	0
<b>Tertiary Lithology</b>	Sandstone	<b>Percent</b>	0
<b>Comments</b>			
<b>System</b>	Silurian		
<b>Series</b>			
<b>Group</b>			
<b>Formation</b>			
<b>Member</b>			
<b>Submember</b>			
<b>Start Depth</b>	110.00 ft	<b>End Depth</b>	200.00 ft
<b>Contact Accuracy</b>			
<b>Penetration</b>			
<b>Primary Lithology</b>	Dolomite	<b>Percent</b>	0
<b>Secondary Lithology</b>	Chert/Chalcedony	<b>Percent</b>	0
<b>Tertiary Lithology</b>		<b>Percent</b>	
<b>Comments</b>			

## Water Production Information

<b>Date</b>	05/13/1957	<b>Start Time</b>	
<b>Aquifer</b>	Unknown		
<b>Static Water Level</b>	17.00 ft	<b>Yield</b>	100 gallons per minute
<b>Pumping Water Level</b>	174 ft	<b>Yield Method</b>	Unknown
<b>Measurement</b>	Unknown	<b>Pump Test</b>	No
<b>Pump Method</b>	Unknown	<b>Duration</b>	0 mins
<b>Comments</b>			

## Chip Storage Information

<b>Date</b>	01/06/1958		
<b>Storage</b>	NA6-3	<b>Bin</b>	
<b>Number of Boxes</b>	1	<b>Number of Samples</b>	41
<b>Sample Intervals</b>	5	<b>Sample Gaps</b>	
<b>Sample Top</b>	0 ft	<b>Sample Bottom</b>	200 ft
<b>Washed Top</b>	17 ft	<b>Washed Bottom</b>	200 ft
<b>Duplicate Storage</b>			
<b>Comments</b>			

<https://www.iihr.uiowa.edu/igs/geosam/well/9352/general-information>