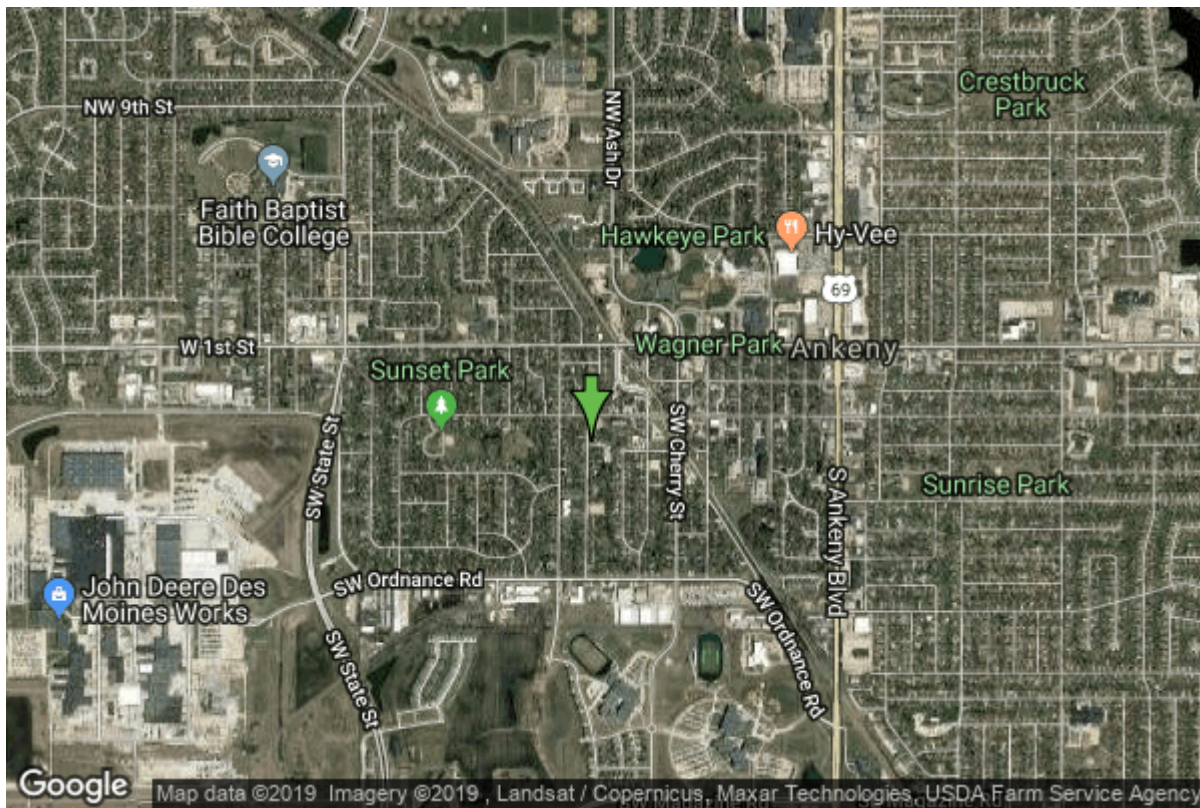


# Well W#9802 Information



<b>Date Received</b>		<b>State</b>	Iowa
<b>Owner Name</b>	Ankeny, City Of	<b>County</b>	Polk
<b>Alt Name</b>	#3	<b>Quadrangle</b>	Des Moines Ne, Iowa
<b>WNumber</b>	9802	<b>Township</b>	T80N
<b>PWTS ID</b>	0	<b>Range</b>	R24W
<b>PWS ID</b>	7709053	<b>Section</b>	23
<b>Storet ID</b>	0	<b>Quarter</b>	NW NE SE
<b>SDWIS ID</b>	0	<b>Latitude</b>	41.7287960000
<b>USGS ID</b>	0	<b>Longitude</b>	-93.6102840000
<b>Project</b>	Source Water Protection	<b>Accuracy</b>	
<b>Operator</b>	Unknown	<b>UTM X</b>	449244
		<b>UTM Y</b>	4619845

---

<b>Site Type</b>	Drilled hole	<b>Drilling Company</b>	Thorpe Well Co.
<b>Well Status</b>	Not Used	<b>Drilling Date</b>	04/26/1958
<b>Field Located</b>	No	<b>Drilling Method</b>	Rotary
<b>Elevation</b>	990 ft	<b>Bedrock Depth</b>	184 ft
<b>Elevation Accuracy</b>	Digital Elevation Model	<b>Well Depth</b>	185 ft
	Accurate to 5 ft	<b>Total Depth</b>	185 ft
<b>Landscape Position</b>	Upland	<b>Well Types</b>	Municipal
		<b>Aquifers</b>	Pleistocene

## Log Information

<b>Date</b>	08/08/1960
<b>Log Types</b>	Strip log

**Prepared By** Unknown  
**Comments**

---

**Date**  
**Log Types** Drillers log  
**Prepared By** Ankeny, City Of  
**Comments**

## Stratigraphy Information

**System** Quaternary  
**Series**  
**Group**  
**Formation**  
**Member**  
**Submember**  
**Start Depth** 0.00 ft **End Depth** 2.00 ft  
**Contact Accuracy**  
**Penetration**  
**Primary Lithology** Soil Or Fill **Percent** 100  
**Secondary Lithology** Unknown **Percent** 0  
**Tertiary Lithology** Unknown **Percent** 0  
**Comments**

---

**System** Quaternary  
**Series** Pleistocene Series  
**Group** Pre-Illinoian  
**Formation**  
**Member**  
**Submember**  
**Start Depth** 2.00 ft **End Depth** 15.00 ft  
**Contact Accuracy**  
**Penetration**  
**Primary Lithology** Till - Oxidized And Unleached **Percent** 100  
**Secondary Lithology** Unknown **Percent** 0  
**Tertiary Lithology** Unknown **Percent** 0  
**Comments**

---

**System** Quaternary  
**Series** Pleistocene Series  
**Group** Pre-Illinoian  
**Formation**  
**Member**  
**Submember**  
**Start Depth** 15.00 ft **End Depth** 25.00 ft  
**Contact Accuracy**  
**Penetration**

<b>Primary Lithology</b>	Till - Unoxidized And Unleached	<b>Percent</b>	100
<b>Secondary Lithology</b>	Unknown	<b>Percent</b>	0
<b>Tertiary Lithology</b>	Unknown	<b>Percent</b>	0
<b>Comments</b>			

---

<b>System</b>	Quaternary		
<b>Series</b>	Pleistocene Series		
<b>Group</b>			
<b>Formation</b>			
<b>Member</b>			
<b>Submember</b>			
<b>Start Depth</b>	25.00 ft	<b>End Depth</b>	30.00 ft
<b>Contact Accuracy</b>			
<b>Penetration</b>			
<b>Primary Lithology</b>	Silt	<b>Percent</b>	100
<b>Secondary Lithology</b>		<b>Percent</b>	
<b>Tertiary Lithology</b>		<b>Percent</b>	
<b>Comments</b>			

---

<b>System</b>	Quaternary		
<b>Series</b>	Pleistocene Series		
<b>Group</b>	Pre-Illinoian		
<b>Formation</b>			
<b>Member</b>			
<b>Submember</b>			
<b>Start Depth</b>	30.00 ft	<b>End Depth</b>	50.00 ft
<b>Contact Accuracy</b>			
<b>Penetration</b>			
<b>Primary Lithology</b>	Till - Oxidized And Leached	<b>Percent</b>	100
<b>Secondary Lithology</b>		<b>Percent</b>	
<b>Tertiary Lithology</b>		<b>Percent</b>	
<b>Comments</b>			

---

<b>System</b>	Quaternary		
<b>Series</b>	Pleistocene Series		
<b>Group</b>	Pre-Illinoian		
<b>Formation</b>			
<b>Member</b>			
<b>Submember</b>			
<b>Start Depth</b>	50.00 ft	<b>End Depth</b>	70.00 ft
<b>Contact Accuracy</b>			
<b>Penetration</b>			
<b>Primary Lithology</b>	Till - Oxidized And Unleached	<b>Percent</b>	100
<b>Secondary Lithology</b>		<b>Percent</b>	
<b>Tertiary Lithology</b>		<b>Percent</b>	
<b>Comments</b>			

---

<b>System</b>	Quaternary		
<b>Series</b>	Pleistocene Series		
<b>Group</b>	Pre-Illinoian		
<b>Formation</b>			
<b>Member</b>			
<b>Submember</b>			
<b>Start Depth</b>	70.00 ft	<b>End Depth</b>	80.00 ft
<b>Contact Accuracy</b>			
<b>Penetration</b>			
<b>Primary Lithology</b>	Till - Oxidized And Unleached	<b>Percent</b>	60
<b>Secondary Lithology</b>	Till - Unoxidized And Unleached	<b>Percent</b>	40
<b>Tertiary Lithology</b>		<b>Percent</b>	
<b>Comments</b>			

---

<b>System</b>	Quaternary		
<b>Series</b>	Pleistocene Series		
<b>Group</b>	Pre-Illinoian		
<b>Formation</b>			
<b>Member</b>			
<b>Submember</b>			
<b>Start Depth</b>	80.00 ft	<b>End Depth</b>	85.00 ft
<b>Contact Accuracy</b>			
<b>Penetration</b>			
<b>Primary Lithology</b>	Till - Unoxidized And Unleached	<b>Percent</b>	90
<b>Secondary Lithology</b>	Till - Oxidized And Unleached	<b>Percent</b>	10
<b>Tertiary Lithology</b>		<b>Percent</b>	
<b>Comments</b>			

---

<b>System</b>	Quaternary		
<b>Series</b>	Pleistocene Series		
<b>Group</b>	Pre-Illinoian		
<b>Formation</b>			
<b>Member</b>			
<b>Submember</b>			
<b>Start Depth</b>	85.00 ft	<b>End Depth</b>	90.00 ft
<b>Contact Accuracy</b>			
<b>Penetration</b>			
<b>Primary Lithology</b>	Till - Unoxidized And Unleached	<b>Percent</b>	80
<b>Secondary Lithology</b>	Till - Oxidized And Unleached	<b>Percent</b>	20
<b>Tertiary Lithology</b>		<b>Percent</b>	
<b>Comments</b>			

---

<b>System</b>	Quaternary		
<b>Series</b>	Pleistocene Series		
<b>Group</b>	Pre-Illinoian		
<b>Formation</b>			
<b>Member</b>			
<b>Submember</b>			
<b>Start Depth</b>	90.00 ft	<b>End Depth</b>	170.00 ft
<b>Contact Accuracy</b>			
<b>Penetration</b>			
<b>Primary Lithology</b>	Till - Unoxidized And Unleached	<b>Percent</b>	100
<b>Secondary Lithology</b>		<b>Percent</b>	
<b>Tertiary Lithology</b>		<b>Percent</b>	
<b>Comments</b>			

---

<b>System</b>	Quaternary		
<b>Series</b>	Pleistocene Series		
<b>Group</b>			
<b>Formation</b>			
<b>Member</b>			
<b>Submember</b>			
<b>Start Depth</b>	170.00 ft	<b>End Depth</b>	185.00 ft
<b>Contact Accuracy</b>			
<b>Penetration</b>			
<b>Primary Lithology</b>	Sand And Gravel	<b>Percent</b>	100
<b>Secondary Lithology</b>		<b>Percent</b>	
<b>Tertiary Lithology</b>		<b>Percent</b>	
<b>Comments</b>			

## Chip Storage Information

<b>Date</b>	06/18/1958		
<b>Storage</b>	NB7-10	<b>Bin</b>	
<b>Number of Boxes</b>	1	<b>Number of Samples</b>	37
<b>Sample Intervals</b>	5	<b>Sample Gaps</b>	
<b>Sample Top</b>	0 ft	<b>Sample Bottom</b>	185 ft
<b>Washed Top</b>	0 ft	<b>Washed Bottom</b>	0 ft
<b>Duplicate Storage</b>			
<b>Comments</b>			

<https://www.iuhr.uiowa.edu/igs/geosam/well/9802/general-information>