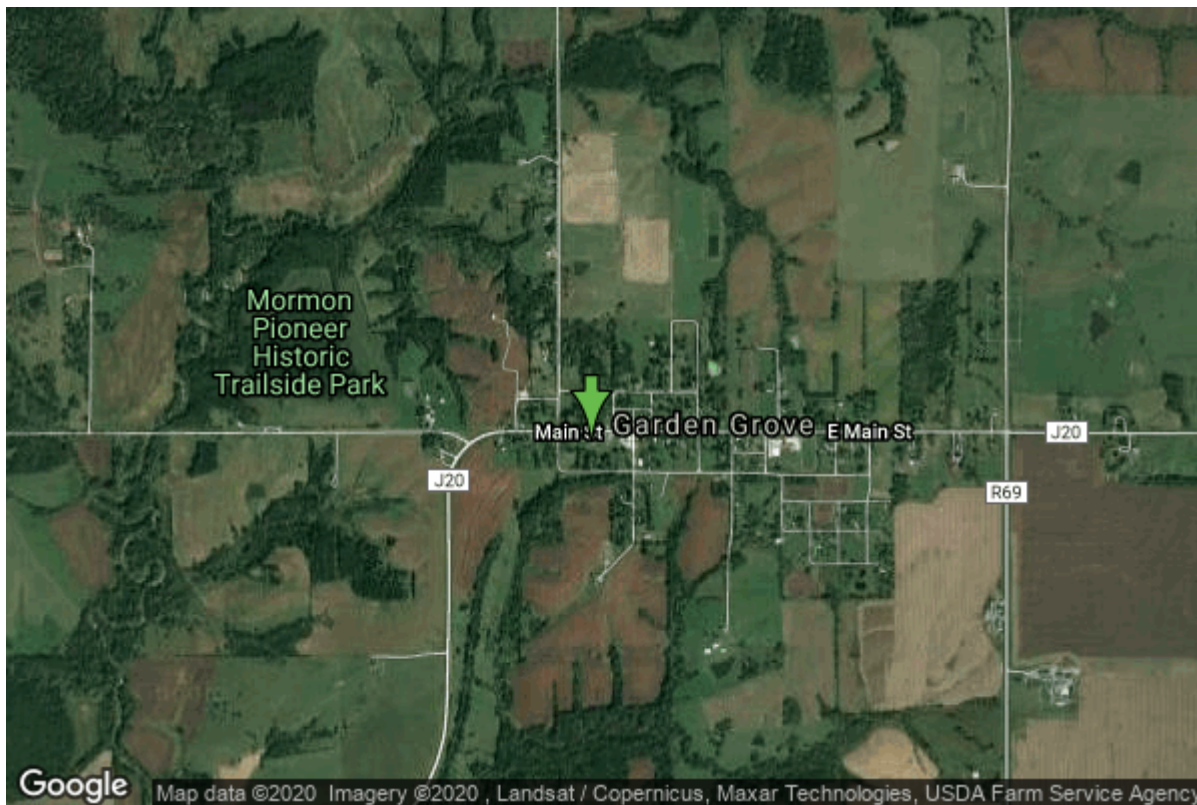


Well W#9894 Information



Date Received		State	Iowa
Owner Name	Garden Grove, City Of	County	Decatur
Alt Name	#1	Quadrangle	Garden Grove, Iowa
WNumber	9894	Township	T70N
PWTS ID	0	Range	R24W
PWS ID	2725073	Section	34
Storet ID	0	Quarter	NW NW NW
SDWIS ID	2413227	Latitude	40.8266970000
USGS ID	0	Longitude	-93.6124160000
Project	Source Water Protection	Accuracy	
Operator	Unknown	UTM X	448360
		UTM Y	4519699

Site Type	Drilled hole	Drilling Company	Sunberg, John
Well Status	Not Used	Drilling Date	01/01/1958
Field Located	No	Drilling Method	Rotary
Elevation	1102 ft	Bedrock Depth	0 ft
Elevation Accuracy	Digital Elevation Model Accurate to 5 ft	Well Depth	1144 ft
Landscape Position	Unknown	Total Depth	1130 ft
		Well Types	Municipal, Public Supply
		Aquifers	Mississippian

Log Information

Date	06/06/1968
Log Types	Strip log

Prepared By Unknown
Comments

Date
Log Types Drillers log
Prepared By Garden Grove, City Of
Comments

Stratigraphy Information

System Quaternary
Series
Group
Formation
Member
Submember
Start Depth 0.00 ft **End Depth** 5.00 ft
Contact Accuracy
Penetration
Primary Lithology Loess **Percent** 60
Secondary Lithology Soil Or Fill **Percent** 40
Tertiary Lithology Unknown **Percent** 0
Comments

System Quaternary
Series Pleistocene Series
Group Pre-Illinoian
Formation
Member
Submember
Start Depth 5.00 ft **End Depth** 20.00 ft
Contact Accuracy
Penetration
Primary Lithology Paleosol **Percent** 100
Secondary Lithology Unknown **Percent** 0
Tertiary Lithology Unknown **Percent** 0
Comments

System Quaternary
Series Pleistocene Series
Group Pre-Illinoian
Formation
Member
Submember
Start Depth 20.00 ft **End Depth** 45.00 ft
Contact Accuracy
Penetration
Primary Lithology Till - Oxidized And **Percent** 100

Secondary Lithology	Unleached	Percent	0
Tertiary Lithology	Unknown	Percent	0
Comments			

System	Quaternary		
Series	Pleistocene Series		
Group			
Formation			
Member			
Submember			
Start Depth	45.00 ft	End Depth	50.00 ft
Contact Accuracy			
Penetration			
Primary Lithology	Sand	Percent	100
Secondary Lithology	Unknown	Percent	0
Tertiary Lithology	Unknown	Percent	0
Comments			

System	Quaternary		
Series	Pleistocene Series		
Group	Pre-Illinoian		
Formation			
Member			
Submember			
Start Depth	50.00 ft	End Depth	65.00 ft
Contact Accuracy			
Penetration			
Primary Lithology	Till - Unoxidized And Unleached	Percent	100
Secondary Lithology	Unknown	Percent	0
Tertiary Lithology	Unknown	Percent	0
Comments			

System	Quaternary		
Series	Pleistocene Series		
Group			
Formation			
Member			
Submember			
Start Depth	65.00 ft	End Depth	120.00 ft
Contact Accuracy			
Penetration			
Primary Lithology	Sand	Percent	100
Secondary Lithology		Percent	
Tertiary Lithology		Percent	
Comments			

System	Quaternary		
---------------	------------	--	--

Series	Pleistocene Series		
Group	Pre-Illinoian		
Formation			
Member			
Submember			
Start Depth	120.00 ft	End Depth	235.00 ft
Contact Accuracy			
Penetration			
Primary Lithology	Till - Unoxidized And Unleached	Percent	100
Secondary Lithology		Percent	
Tertiary Lithology		Percent	
Comments			

System	Pennsylvanian (Subsystem Of Carboniferous System)		
Series			
Group	Marmaton		
Formation			
Member			
Submember			
Start Depth	235.00 ft	End Depth	330.00 ft
Contact Accuracy			
Penetration			
Primary Lithology	Shale	Percent	0
Secondary Lithology	Limestone	Percent	0
Tertiary Lithology	Coal	Percent	0
Comments			

System	Pennsylvanian (Subsystem Of Carboniferous System)		
Series			
Group	Cherokee		
Formation			
Member			
Submember			
Start Depth	330.00 ft	End Depth	858.00 ft
Contact Accuracy			
Penetration			
Primary Lithology	Shale	Percent	0
Secondary Lithology	Sandstone	Percent	0
Tertiary Lithology	Limestone	Percent	0
Comments			

System	Mississippian (Subsystem Of Carboniferous System)		
Series			
Group			
Formation	St. Louis		
Member			
Submember			
Start Depth	858.00 ft	End Depth	905.00 ft

Contact Accuracy			
Penetration			
Primary Lithology	Limestone	Percent	0
Secondary Lithology	Dolomite	Percent	0
Tertiary Lithology		Percent	
Comments			

System	Mississippian (Subsystem Of Carboniferous System)		
Series			
Group	Augusta		
Formation	Warsaw		
Member			
Submember			
Start Depth	905.00 ft	End Depth	960.00 ft
Contact Accuracy			
Penetration			
Primary Lithology	Shale	Percent	0
Secondary Lithology	Dolomite	Percent	0
Tertiary Lithology		Percent	
Comments			

System	Mississippian (Subsystem Of Carboniferous System)		
Series			
Group	Augusta		
Formation	Keokuk		
Member			
Submember			
Start Depth	960.00 ft	End Depth	1052.00 ft
Contact Accuracy			
Penetration			
Primary Lithology	Limestone	Percent	0
Secondary Lithology	Chert/Chalcedony	Percent	0
Tertiary Lithology	Dolomite	Percent	0
Comments			

System	Mississippian (Subsystem Of Carboniferous System)		
Series			
Group	Augusta		
Formation	Burlington		
Member	Cedar Fork		
Submember			
Start Depth	1052.00 ft	End Depth	1082.00 ft
Contact Accuracy			
Penetration			
Primary Lithology	Limestone	Percent	0
Secondary Lithology	Chert/Chalcedony	Percent	0
Tertiary Lithology	Dolomite	Percent	0
Comments			

System	Mississippian (Subsystem Of Carboniferous System)		
Series			
Group	Augusta		
Formation	Burlington		
Member	Haight Creek		
Submember			
Start Depth	1082.00 ft	End Depth	1130.00 ft
Contact Accuracy			
Penetration			
Primary Lithology	Dolomite	Percent	0
Secondary Lithology	Chert/Chalcedony	Percent	0
Tertiary Lithology	Limestone	Percent	0
Comments			

Chip Storage Information

Date	08/14/1958		
Storage	DB2-23,24	Bin	
Number of Boxes	2	Number of Samples	207
Sample Intervals	5	Sample Gaps	MANY
Sample Top	0 ft	Sample Bottom	1130 ft
Washed Top	800 ft	Washed Bottom	1130 ft
Duplicate Storage			
Comments			

<https://www.iuhr.uiowa.edu/igs/geosam/well/9894/general-information>