

17425

IOWA GEOLOGICAL SURVEY
In Cooperation with the U.S. Geological Survey
RECORD OF WELL

Location: 75' N. of Water Tower

Town: WILKIE (NE) County: DALLAS
(SW)

SE NE NW Sec. 33, T. 79, N. , R. 26 ^(E) _(W) Twp.

Well name and number

Owner WAUKEE TOWN WELL Address WAUKEE, IOWA
(1965)

Tenant	Address
--------	---------

Contractor THORPE Well Co. Address DES MOINES, IOWA

Drillers DARWIN EVANS; BOB WALL; WES MC CALLIE; ALBERT JACKSON; BOYD McLENNAN

Drilling dates: Jan 11 - Sept. 30, 1965

Well data:

Altitudes: Drilling curb feet; Land surface feet 1095

Determined by

Topographic position

Total depth: Reported 27.37 feet; Measured _____ feet

Drilling method: ROTARY 0-1007'; CABLE TOOLS 2737'

Hole and casing data

97'	OF	13 ³ / ₈ "	CSG.	0-97'
1014'	OF	8"	CSG.	+2' TO 1012' - CEMENT GROUTED
153'	OF	7"	LINER	1643'-1796'

1947' of 5" csg. 974'-2421' - CEMENT GRADED

Original depth to water ft. below Date

Source of data

Sources of water: Principal PRINCE CHEN, JORDAN

Others ST. LAWRENCE?

PRODUCTION DATA

Date

Static water level 295

Pumping water level 370

Yield (g.p.m.) 500 Temp. 80°

Measuring point

Duration of pumping

Specific capacity 6.66

LABORATORY DATA Ph 6-264-265-266

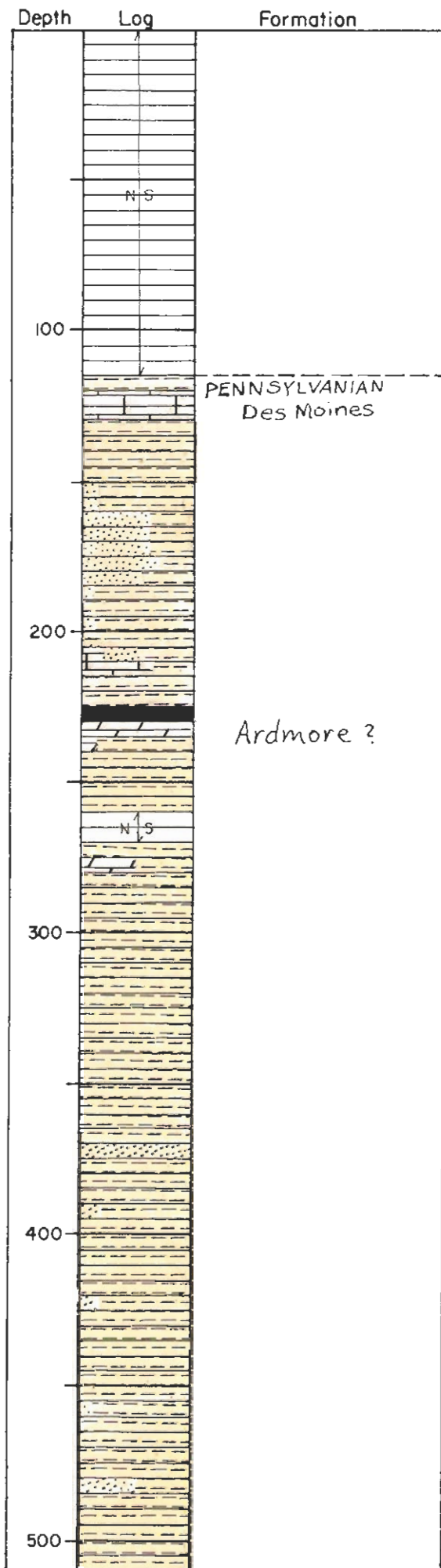
Well No. #17425 Sample range 115-2737 No. of samples 481

No. of cups. and cond. 481 Fai Washed range 115-2737

Samples prepared by Bud Scheetz Date 1965

Logged by NORTHUP Date 1965

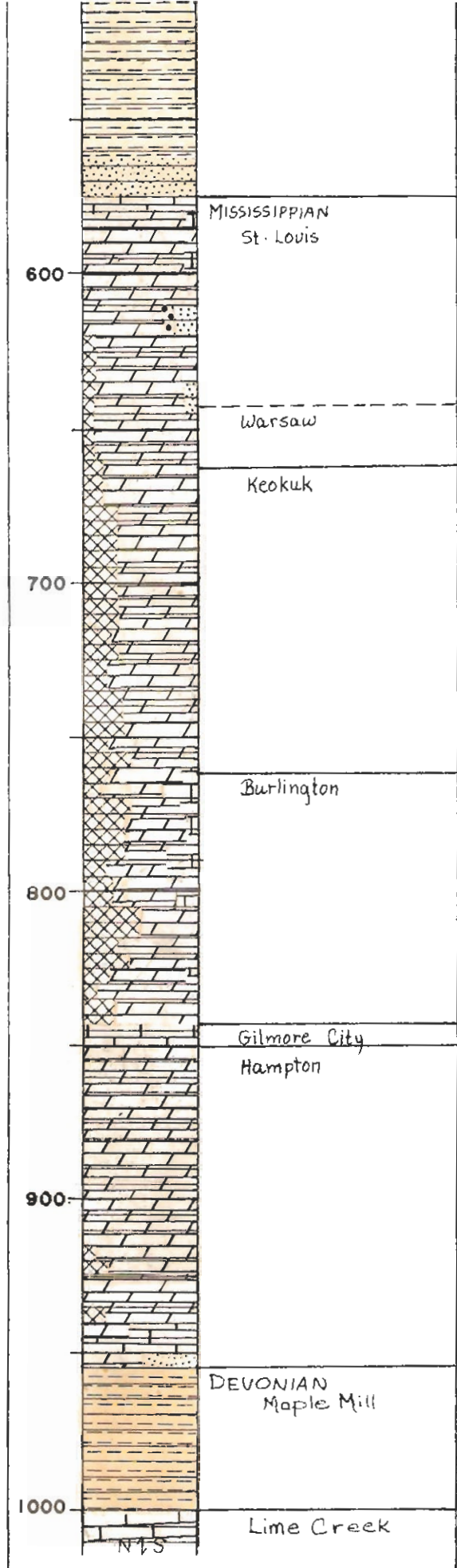
Correlations by Date

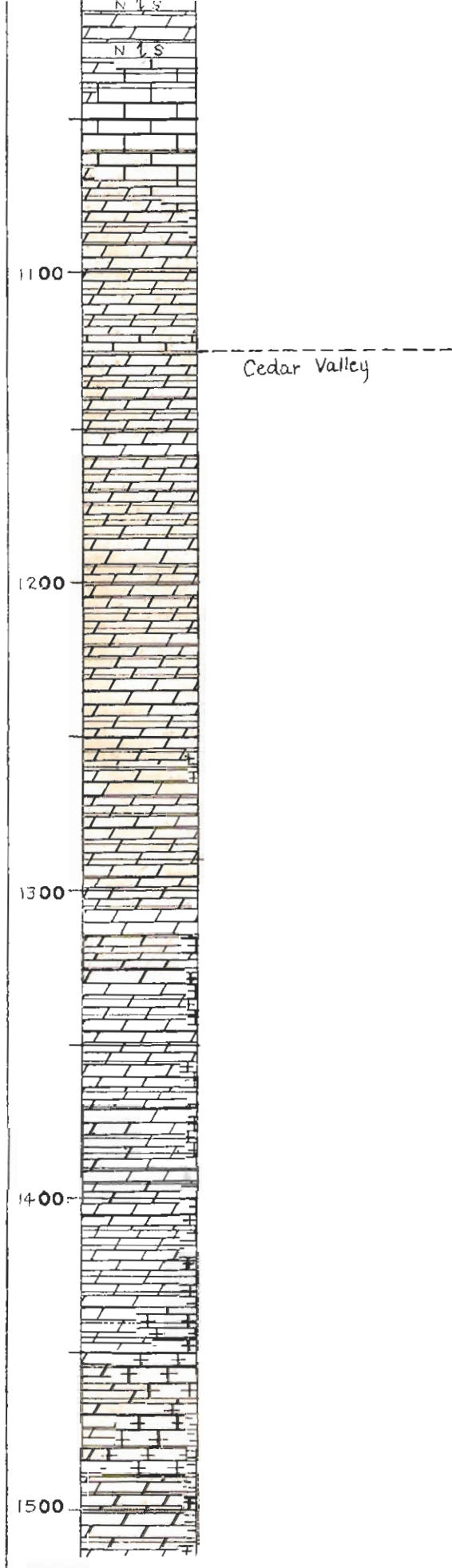


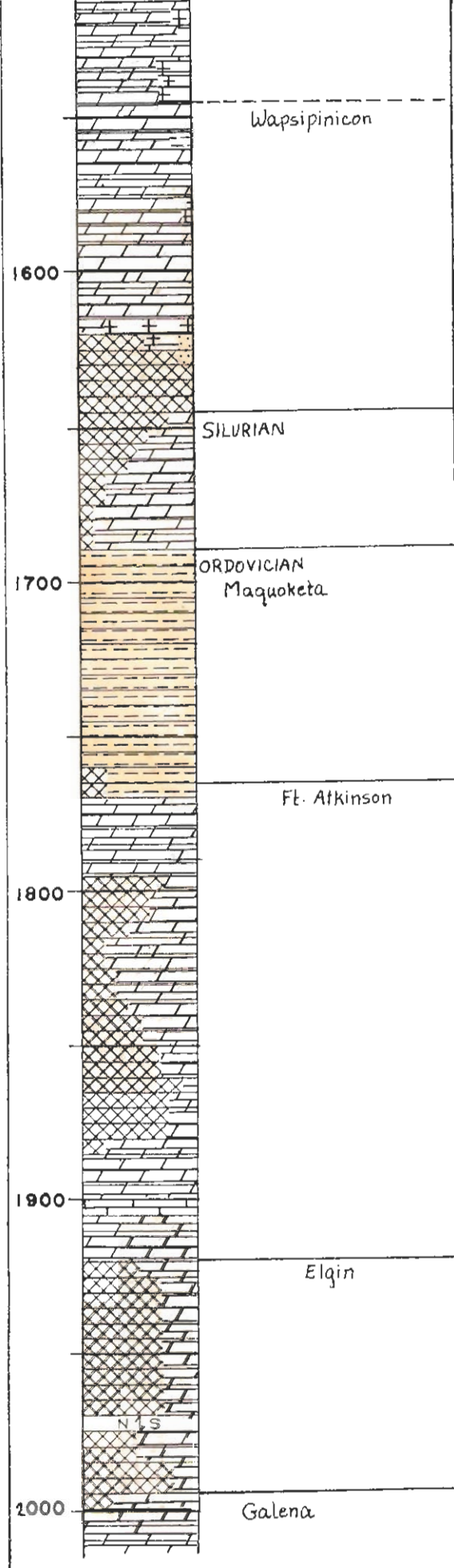
IOWA GEOLOGICAL SURVEY In Cooperation with U. S. GEOLOGICAL SURVEY Iowa City, Iowa		
Name Waukeetown Well #3 (1965)		State Iowa
Town Waukeetown	County Dallas	Loc.
Contractor Driller Thorpe Well Co.		Sec. 33
Drilling Dates Jan. 11 - Sept. 30, 1965		T. N., R. 79 N. 26 W.
Casing Record 97' of 13 3/8" csg. 0-97'		
1014' of 8" csg. + 2' to 1012' - cement grouted		
153' of 7" OD liner 1643'-1796'		
1447' of 5" csg. 974'-2421' - cement grouted		
S.W.L. 295'	G.P.M. 500	D.D. 75'
6.6 gpm/ft dd = sp. cap.		
Remarks		Elev. 1045 ±
		T.D. 2737'
Logged By Northrup - 1965		I.G.S. No. W-17425

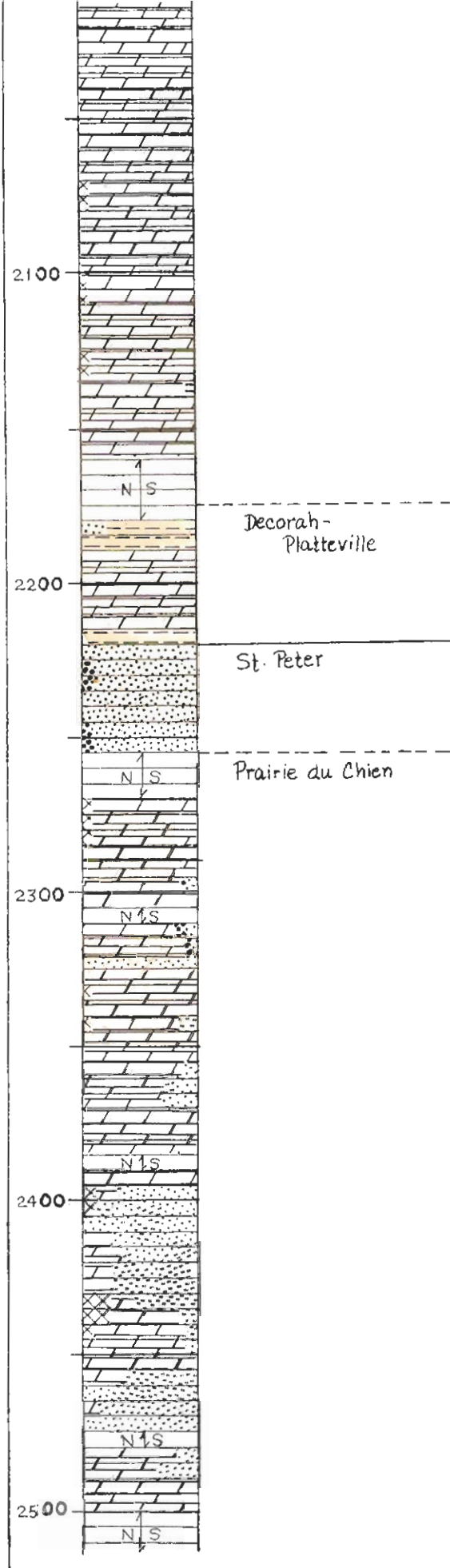
Exploration
of Colors

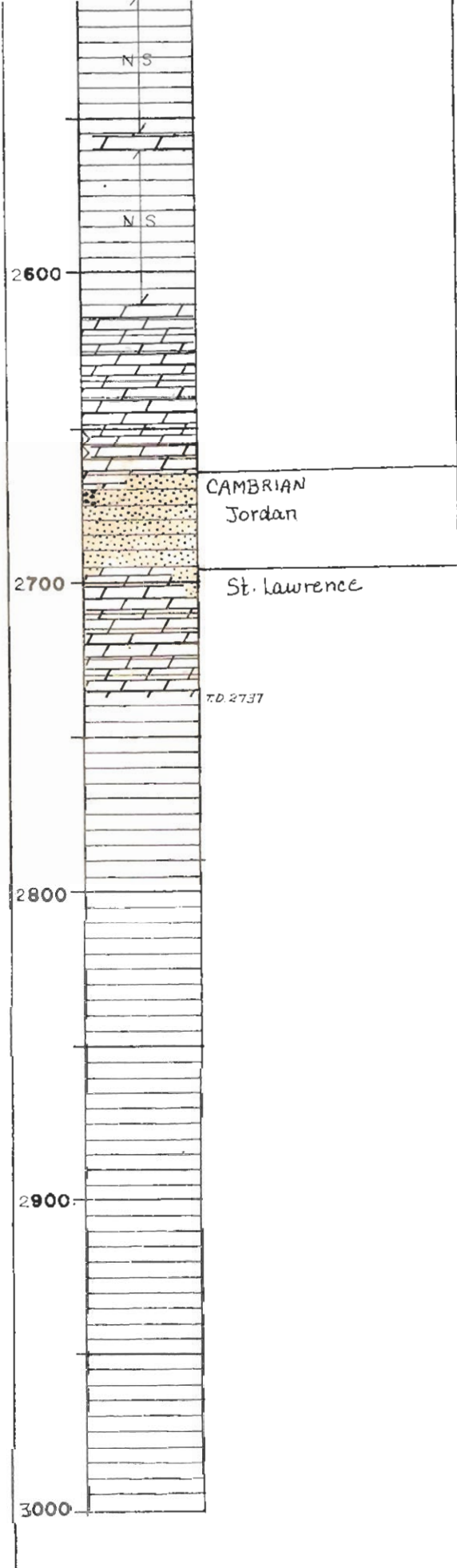
- Soil
- Loess, Silt on Siltstone
- Drift
- Sand & Gravel
- Shale
- Sandstone
- Limestone
- Dolomite
- Chert
- Gypsum or Anhydrite
- Coal
- No Samples











GW Waukeee well folder
Dallas Co.

August 23, 1965

MEMORANDUM

TO: H. G. Hershey
FROM: R. C. Northup
RE: Well at Waukeee

Samples from the well at Waukeee have been received to 2,295'. They are in the Prairie du Chien which was probably reached at around 2,260', though the exact top cannot be picked as the cuttings washed away and it was impossible to catch samples from 2,255' to 2,270'. This strongly suggests crevices to me, probably at the top of the Prairie du Chien, and I discussed the situation with Wes Thorpe when I called him this morning. He reports that the static water level fell from 202' to 240' at the 2,265-foot level, and since then there have been a number of minor fluctuations up and down. More crevices are indicated from 2,305' to 2,320' where again it was impossible to bail any cuttings. After the last run from 2,320 to 2,325 they were again able to catch a sample. A rough test on the water was made and Wes reports the quality to be poor. Of course everything below the lower Maquoketa is open and they are probably not getting a representative sample from the Prairie du Chien. At any rate they want to go to about 2,375' before setting their final string of casing. Waukeee may be in a highly fractured area, as suggested by the high yields of a number of Jordan wells in Polk County. Thorpe also encountered a number of crevices in their Jordan wells at Milo and Stuart.

This creviced condition in the Oneota may be fairly widespread in Polk, Dallas Warren and Madison Counties

PS Horick 10/72