

IOWA'S WATER

Ambient Monitoring Program

Water Quality Summary 2000-2012*

Water Quality Parameter	Units	Number of Samples	Min Value	Percentiles					Max Value
				10th	25th	50th	75th	90th	
Acetochlor ⁽⁴⁾	µg/L	7,849	<0.1	<0.1	<0.1	<0.1	<0.1	0.13	11
Alachlor ⁽⁴⁾	µg/L	7,853	<0.1	<0.1	<0.1	<0.1	<0.1	<0.1	2
Ammonia (as N)	mg/L	11,824	<0.1	<0.1	<0.1	<0.1	<0.1	0.18	5.7
Atrazine ⁽⁴⁾	µg/L	7,324	<0.1	<0.1	<0.1	<0.1	0.2	0.61	53
Butylate	µg/L	7,324	<0.1	<0.1	<0.1	<0.1	<0.1	<0.1	<0.1
Carbonaceous BOD (5 day)	mg/L	11,557	<2	<2	<2	<2	2	4	35
Chloride	mg/L	11,123	<1	11	16	21	29	39	170
Chlorophyll a ⁽¹⁾	µg/L	4,949	<1	2	5	13	43	121	640
Chlorophyll b ⁽¹⁾	µg/L	4,942	<1	<1	<1	<1	<1	2	70
Chlorophyll c ⁽¹⁾	µg/L	4,942	<1	<1	<1	<1	2	8	66
Chlorophyll free of pheophytin	µg/L	6,835	<1	2	4	10	29	82	870
Corrected Chlorophyll a	µg/L	4,979	<1	<1	3	10	36	110	620
Cyanazine ⁽⁴⁾	µg/L	7,323	<0.1	<0.1	<0.1	<0.1	<0.1	<0.1	1.3
Deethylatrazine ⁽⁴⁾	µg/L	7,324	<0.1	<0.1	<0.1	<0.1	<0.1	0.14	2.6
Deisopropylatrazine ⁽⁴⁾	µg/L	7,311	<0.1	<0.1	<0.1	<0.1	<0.1	<0.1	0.54
Dimethenamid ⁽⁴⁾	µg/L	7,287	<0.1	<0.1	<0.1	<0.1	<0.1	<0.1	5.5
Diss. Orthophosphate (as P)	mg/L	11,772	<0.1	<0.1	<0.1	<0.1	0.15	0.26	5.2
Dissolved Oxygen	mg/L	11,933	0.7	7.8	8.8	10.7	13.0	14.4	21
<i>E. coli</i> Bacteria	CFU/100 ml	11,809	<10	<10	30	110	390	2,000	960,000
Field pH	pH units	11,960	5.0	7.8	8.0	8.2	8.4	8.5	10.9
Field Temperature	Celsius	11,992	0.0	0.1	2.0	12.1	20.5	24.5	34.3
Flow**	CFS	9,482	<1	27	100	370	1,300	3,700	82,000
Metolachlor ⁽⁴⁾	µg/L	7,849	<0.1	<0.1	<0.1	<0.1	<0.1	<0.1	23
Metribuzin ⁽⁴⁾	µg/L	7,322	<0.1	<0.1	<0.1	<0.1	<0.1	<0.1	1.5
Nitrate+Nitrite (as N)	mg/L	11,824	<0.1	0.7	2.7	5.5	8.0	11	35
Pheophytin ⁽¹⁾	µg/L	4,942	<1	<1	1	3	8	19	204
Silica ⁽²⁾	mg/L	8,317	<1	5.0	9.0	13	17	21	190
Simazine ⁽⁴⁾	µg/L	7,313	<0.1	<0.1	<0.1	<0.1	<0.1	<0.1	20
Specific Conductance ⁽³⁾	µmhos/cm	8,488	120	420	510	620	720	830	1,700
Sulfate	mg/L	10,824	<1	19	25	35	60	97	400
Total Dissolved Solids	mg/L	11,818	30	250	300	360	430	500	1,640
Total Hardness (as CaCO ₃)	mg/L	11,595	55	200	240	300	360	410	820
Total Kjeldahl Nitrogen	mg/L	11,821	<0.1	0.3	0.5	0.8	1.2	1.8	28
Total Phosphorus	mg/L	11,823	<0.1	<0.1	0.11	0.19	0.31	0.54	26
Total Suspended Solids	mg/L	11,816	<1	4	10	33	82	200	17,000
Trifluralin ⁽⁴⁾	µg/L	7,291	<0.1	<0.1	<0.1	<0.1	<0.1	<0.1	0.35
Turbidity	NTU	11,769	<1.0	2.7	5.7	16	39	92	8,500

µg/L – micrograms per liter mg/L – milligrams per liter
 CFU/100 ml – Colony Forming Units per 100 milliliters of water
 CFS – Cubic Feet per Second (ft³/sec)
 µmhos/cm – micromhos per centimeter
 NTU – Nephelometric Turbidity Units
 Diss. – Dissolved
 < – less than detection limit shown
 BOD – Biological Oxygen Demand

Raw data are available through STORET: <https://programs.iowadnr.gov/iastoret/>

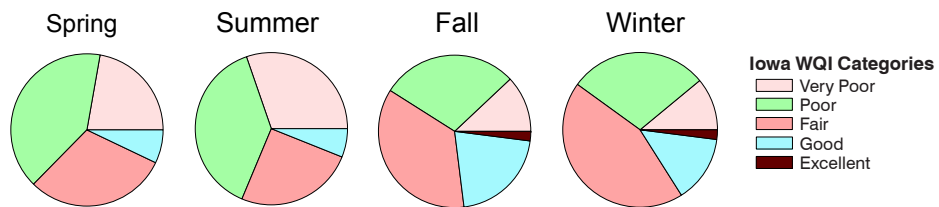
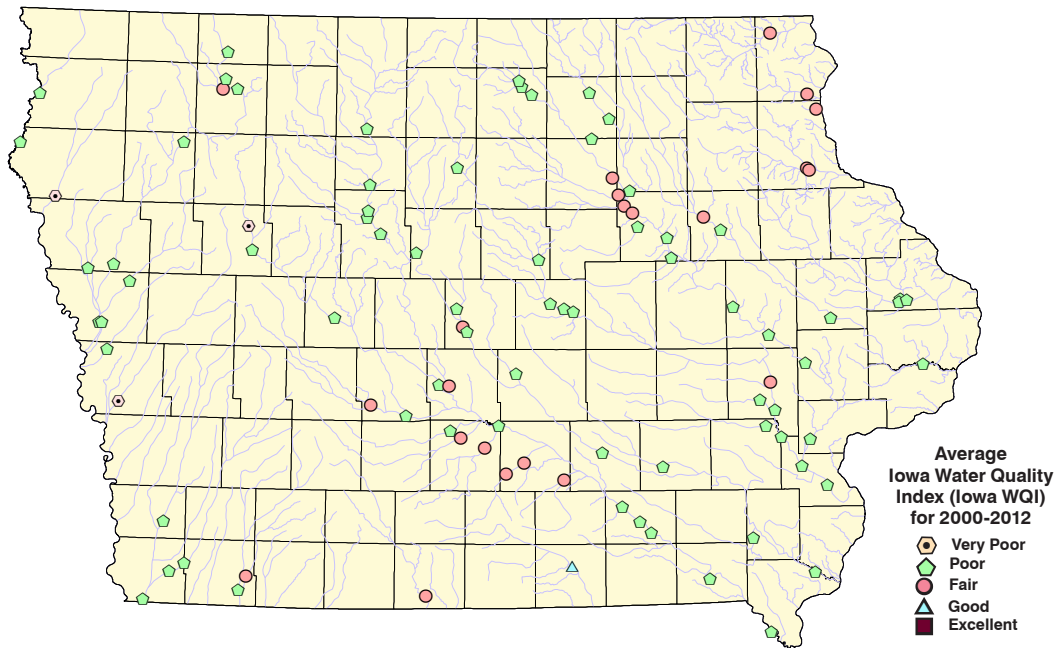
Note: This summary differs from previous summaries in that it only includes the monthly and event data for stream sites monitored as part of the fixed monthly network. Previous summaries included monthly, event, and other available data for these sites. Additional stream sites throughout Iowa are also monitored but are not included in this summary since their sampling frequency and parameters vary from the fixed network.

* Includes monthly and event samples for all stream sites
 ** Provisional data from the U.S. Geological Survey and State Hygienic Laboratory at the University of Iowa
¹ Sampling discontinued in 2005
² Sampling discontinued in 2008
³ Sampling discontinued in 2009
⁴ Sampling suspended from Sep 2008 through May 2012

A total of 80 stream sites were sampled monthly from 2000–2002. A total of 84 stream sites were sampled monthly from 2003–2006. Number of sites sampled from Aug–Dec 2006 varied from 75 to 83. A total of 75 stream sites were sampled monthly from Jan 2007–Sept 2010. However, due to budget constraints, the network of 75 stream sites were not fully monitored Sept 2008 – Mar 2009. A total of 81 stream sites were sampled monthly from Oct 2010–Jun 2012. A total of 75 stream sites were sampled monthly since Jul 2012.

Iowa Water Quality Index for 2000-2012

In 2005, the Iowa Department of Natural Resources developed the Iowa Water Quality Index (WQI), a standardized method for comparing the water quality of various water bodies across the state. The Iowa WQI rates water quality using the following nine parameters: biological oxygen demand, dissolved oxygen, *E.coli* bacteria, nitrate+nitrite as nitrogen, total detected pesticides, pH, total phosphorus, total dissolved solids, and total suspended solids. If a result is missing for any of these parameters, the Iowa WQI assigns a default value for the missing parameters. Iowa WQI ranks range from 0 – 100 and streams are classified as **very poor** (0 – 25), **poor** (25.1 – 50), **fair** (50.1 – 70), **good** (70.1 – 90), and **excellent** (90.1 – 100). For 2000-2012, 1% of the monthly stream WQI values were in the **excellent** category, 12% were **good**, 34% were **fair**, 34% were **poor**, and 19% were **very poor**. (See map below for average WQI rank for each site.)



Streams in Iowa show seasonal Iowa WQI patterns. For the majority of streams, water quality is **poor** during the spring, followed by a decline in water quality during the summer months when the number of streams in the **very poor** category increases, while the number of streams in the **poor** category remains relatively the same. Water quality is at its best during the winter months, with nearly 60% of the streams classified in the **fair**, **good**, and **excellent** categories. (See pie charts above.)



Prepared by
Iowa Department of Natural Resources, Geological and Water Survey
109 Trowbridge Hall, Iowa City, IA 52242-1319